

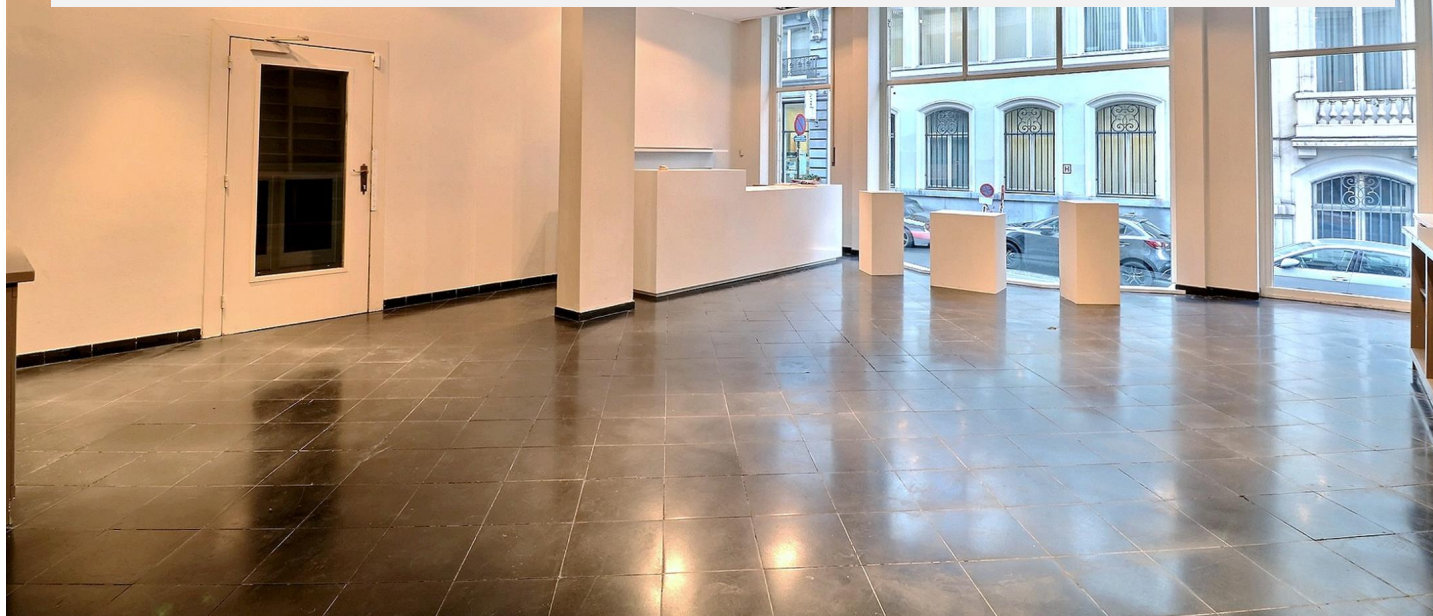
SABLON/PALAIS ROYAL, EXCEPT BUILDING ± 1.425 M², GARDEN

3 200 000 €

Ref 4526920

Ixelles - House 15339 sq ft

**VANEAU
LECOBEL**
Real Estate Brussels



About this property

UNDER OFFER! Between the Sablon and the Royal Palace, beautiful mixed building (trade + offices) of $\hat{A}\pm 1,425 \text{ m}^2$ gross dating from 1900 with garden, terraces and large cellars. It includes a $\hat{A}\pm 384 \text{ m}^2$ floor space with a large terrace and a garden (possibility of a restaurant with permit), 4 office floors for a total of $\hat{A}\pm 767 \text{ m}^2$, an attic and cellars of $\hat{A}\pm 275 \text{ m}^2$. Plot of 490 m^2 and beautiful frontage of 9,60 M. Beautiful view of the gardens of the Palais Royal! Many development opportunities! Character building in a sought after area of Brussels. To visit without delay! EPC: G

VANEAU LECOBEL
BRUSSELS SOUTH
G. Brugmann Square 10B
1050 Ixelles
ph +32 2 346 33 55
✉ [lecobel@vaneau-
lecobel.be](mailto:lecobel@vaneau-lecobel.be)

Reference : 4526920

Price : 3 200 000 €

Surface : 15339 sq ft

Bedroom(s) : 1

Bathroom(s) : 3

Shower room(s) : 5

Garden : Yes

Cellar : Yes

Elevator : Yes

Terrace : Yes

**Availabili
ty :** 29/03/2019 -
12:00

SABLON/PALAIS ROYAL, EXCEPT BUILDING ± 1.425 M²,
GARDEN

3 200 000 €

Ref 4526920

Ixelles - House 15339 sq ft

**VANEAU
LECOBEL**
Real Estate Brussels



SABLON/PALAIS ROYAL, EXCEPT BUILDING ± 1.425 M²,
GARDEN

3 200 000 €

Ref 4526920

Ixelles - House 15339 sq ft

**VANEAU
LECOBEL**
Real Estate Brussels



VANEAU

Immobilier de prestige depuis
1972

VANEAU LOCATION

Une équipe dédiée à Paris,
Neuilly et Boulogne

VANEAU VIAGER

30 ans d'expérience en vente
viagère

VANEAU

C'EST AUSSI

VANEAU BUREAUX & COMMERCES

+10 000 offres disponibles

VANEAU PATRIMOINE

Dispositifs de défiscalisation,
SCPI, Assurances Vie

VANEAU DIGITAL NEUF

La plate-forme digitale 100%
immobilier neuf

COURTAGE CRÉDITS

Exell Crédit immobiliers
Assurances emprunteurs

GESTION LOCATIVE

GTF, plus de 7 000 lots gérés à
Paris

140 collaborateurs

1200 signatures par an

1000 immeubles par an

2.5 milliards d'actifs gérés