

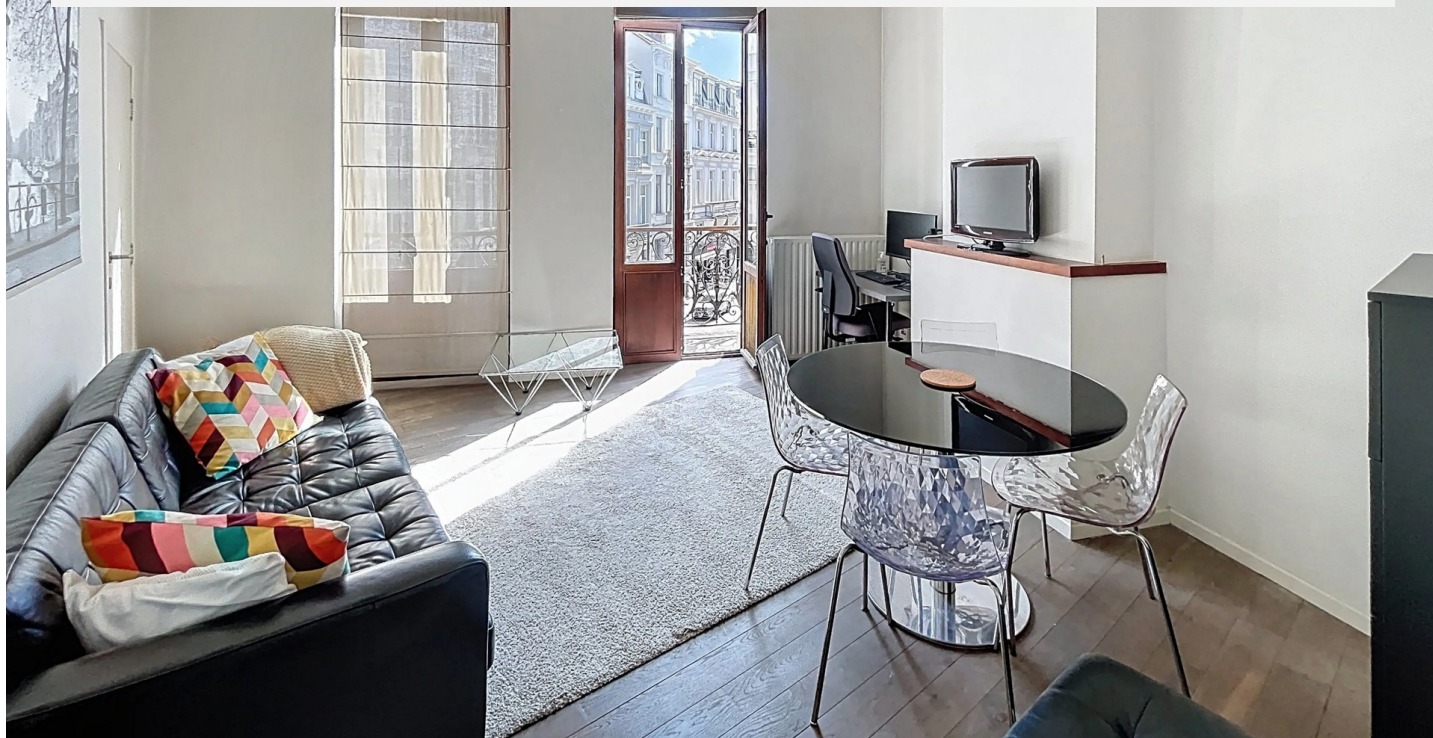
# CONGRESS: BEAUTIFUL FURNISHED 1 BR. APARTMENT WITH BALCONY

1 200 €

Ref 7686607

Bruxelles - Apartment 646 sq ft

**VANEAU  
LECOBEL**  
Real Estate Brussels



## About this property

Close to the Congress Column, superb furnished apartment with a total area of  $\hat{A}\hat{A}\hat{A}\pm 60 \text{ m}^2$  in the beautiful 19th century building. It consists of an entrance hall, a pretty living room ( $\hat{A}\pm 20 \text{ m}^2$ ), a separate and fully equipped kitchen, a beautiful bedroom ( $\hat{A}\pm 12 \text{ m}^2$ ) with an adjoining shower room and a separate toilet. The apartment also has two beautiful balconies facing south and accessible from the living room and the bedroom. Charges: 100 €/month (Provision for cold water and maintenance of common areas). PEB D -. To discover as soon as possible at Vaneau Lecobel!!

VANEAU LECOBEL  
BRUSSELS EAST  
200 , Belliardstreet - 1000  
Brussels  
ph +32 2 669 70 90  
✉ [est@vaneau-lecobel.be](mailto:est@vaneau-lecobel.be)

**Reference :** 7686607

**Price :** 1 200 €

**Surface :** 646 sq ft

**Bedroom(s) :** 1

**Floor :** 2

**Bathroom(s) :** 1

**Shower room(s) :** 1

**Garden :** Yes

**Elevator :** Yes

**Loads :** 100 €

**Availabili  
ty :** 01/07/2026 -  
12:00



# CONGRESS: BEAUTIFUL FURNISHED 1 BR. APARTMENT WITH BALCONY

1 200 €

Ref 7686607

Bruxelles - Apartment 646 sq ft

**VANEAU  
LECOBEL**  
Real Estate Brussels





# CONGRESS: BEAUTIFUL FURNISHED 1 BR. APARTMENT WITH BALCONY

1 200 €

Ref 7686607

Bruxelles - Apartment 646 sq ft

**VANEAU  
LECOBEL**  
Real Estate Brussels





## **VANEAU**

Immobilier de prestige depuis  
1972

### **VANEAU LOCATION**

Une équipe dédiée à Paris,  
Neuilly et Boulogne

### **VANEAU VIAGER**

30 ans d'expérience en vente  
viagère

# **VANEAU C'EST AUSSI**

### **VANEAU BUREAUX & COMMERCES**

+10 000 offres disponibles

### **VANEAU PATRIMOINE**

Dispositifs de défiscalisation,  
SCPI, Assurances Vie

### **VANEAU DIGITAL NEUF**

La plate-forme digitale 100%  
immobilier neuf

### **COURTAGE CRÉDITS**

Exell Crédit immobiliers  
Assurances emprunteurs

### **GESTION LOCATIVE**

GTF, plus de 7 000 lots gérés à  
Paris

**140 collaborateurs**

**1200 signatures par an**

**1000 immeubles par an**

**2.5 milliards d'actifs gérés**