

THE STANDING ANTHEA PROJECT OVERLOOKS VAL DUCHESSE!

925 000 €

Ref 7677552

Auderghem - Apartment 1343 sq ft

**VANEAU
LECOBEL**
Real Estate Brussels



About this property

Vaneau Lecobel offers you this magnificent new 3-bedroom apartment with a surface area of approximately 125m² on the 6th floor of the new Anthea project. Ideally located in the heart of the green surroundings of the Woluwe Valley, the apartment is laid out as follows: Entrance hall with cloakroom, guest toilet, laundry room, bright living/dining room with a surface area of approximately 40m² with a fully equipped open kitchen, terrace of approximately 31m². The hall leads to the master bedroom (+-17m²) and bathroom (+- 4m²), as well as two bedrooms (+-12 and 13m²) with access to the terrace and a shower room. The materials have been carefully chosen to ensure high energy efficiency, including triple glazing, an individual dual-flow ventilation system, air-to-water heat pumps, and underfloor heating. Parking spaces, garages, and cellars are available at an additional cost. Delivery at the end of 2026. Sale subject to VAT. Please do not hesitate to contact us for further information on 02/669.21.70 or by email at promotion@vaneau-lecobel.be.

VANEAU LECOBEL NEW PROJECTS

Georges Brugmann Square
10B 1050 Ixelles

ph +32 2 669 21 70

✉ promotion@lecobel.be

Reference : 7677552

Price : 925 000 €

Surface : 1343 sq ft

Bedroom(s) : 3

Floor : 6

Bathroom(s) : 2

Cellar : Yes

Elevator : Yes

Parking(s) : 1

Terrace : Yes

Availability : 01/10/2026 -
12:00

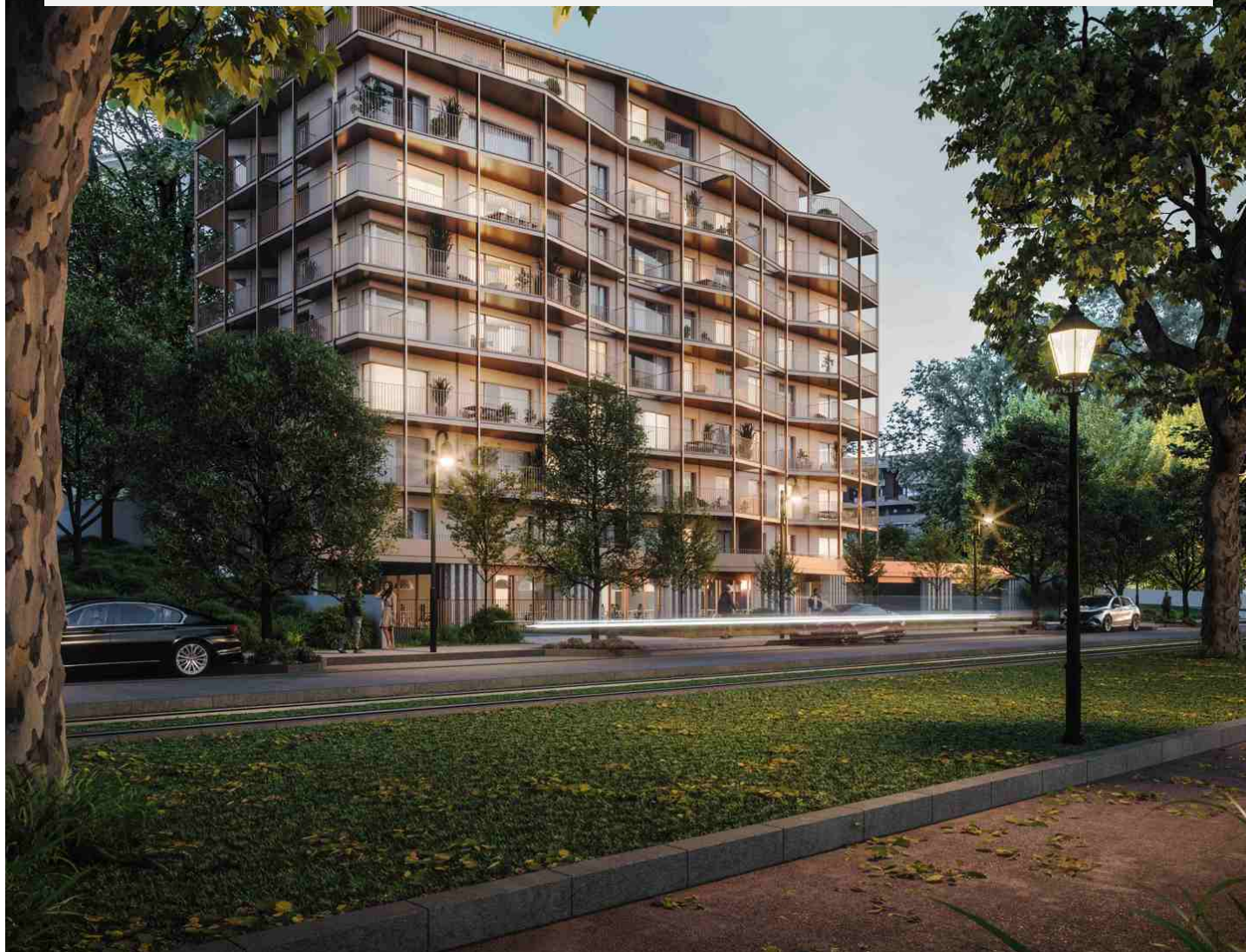
THE STANDING ANTHEA PROJECT OVERLOOKS VAL DUCHESSÉ!

925 000 €

Ref 7677552

Auderghem - Apartment 1343 sq ft

**VANEAU
LECOBEL**
Real Estate Brussels





THE STANDING ANTHEA PROJECT OVERLOOKS VAL DUCHESSÉ!

925 000 €

Ref 7677552

Auderghem - Apartment 1343 sq ft

**VANEAU
LECOBEL**
Real Estate Brussels





VANEAU

Immobilier de prestige depuis
1972

VANEAU LOCATION

Une équipe dédiée à Paris,
Neuilly et Boulogne

VANEAU VIAGER

30 ans d'expérience en vente
viagère

VANEAU

C'EST AUSSI

VANEAU BUREAUX & COMMERCES

+10 000 offres disponibles

VANEAU PATRIMOINE

Dispositifs de défiscalisation,
SCPI, Assurances Vie

VANEAU DIGITAL NEUF

La plate-forme digitale 100%
immobilier neuf

COURTAGE CRÉDITS

Exell Crédit immobiliers
Assurances emprunteurs

GESTION LOCATIVE

GTF, plus de 7 000 lots gérés à
Paris

140 collaborateurs

1200 signatures par an

1000 immeubles par an

2.5 milliards d'actifs gérés