

# THE STANDING ANTHEA PROJECT OVERLOOKS VAL DUCHESSE!

545 000 €

Ref 7677465

Auderghem - Apartment 980 sq ft

**VANEAU  
LECOBEL**  
Real Estate Brussels



## About this property

Vaneau Lecobel offers you this magnificent new 2-bedroom apartment with a surface area of approximately 95m<sup>2</sup> on the 3rd floor of the new Anthea project. Ideally located in the heart of the green surroundings of the Woluwe Valley, the apartment is presented as follows: Entrance hall with cloakroom, guest toilet, bright living/dining room with a surface area of approximately 36m<sup>2</sup> with a fully equipped open kitchen of approximately 5m<sup>2</sup>, terrace of approximately 15m<sup>2</sup>. The night hall leads to one bedroom (approximately 15m<sup>2</sup>), one bedroom of approximately 10m<sup>2</sup> and a bathroom of approximately 5m<sup>2</sup>. One of the bedrooms has access to the terrace. The materials have been carefully chosen to ensure high energy efficiency, including triple glazing, an individual dual-flow ventilation system, air-to-water heat pumps, and underfloor heating. Parking spaces, garages, and cellars are available at an additional cost. Delivery at the end of 2026. Sale subject to VAT. Please do not

## VANEAU LECOBL NEW PROJECTS

Georges Brugmann Square  
10B 1050 Ixelles

ph +32 2 669 21 70

✉ [promotion@lecobel.be](mailto:promotion@lecobel.be)

**Reference :** 7677465

**Price :** 545 000 €

**Surface :** 980 sq ft

**Bedroom(s) :** 2

**Floor :** 3

hesitate to contact us for further information on 02/669.21.70 or by email at [promotion@vaneau-lecobel.be](mailto:promotion@vaneau-lecobel.be).

**Bathroom(s) :** 1

---

**Elevator :** Yes

---

**Availabili** 01/10/2026 -

**ty :** 12:00

# THE STANDING ANTHEA PROJECT OVERLOOKS VAL DUCHESSE!

545 000 €

Ref 7677465

Auderghem - Apartment 980 sq ft

**VANEAU  
LECOBEL**  
Real Estate Brussels





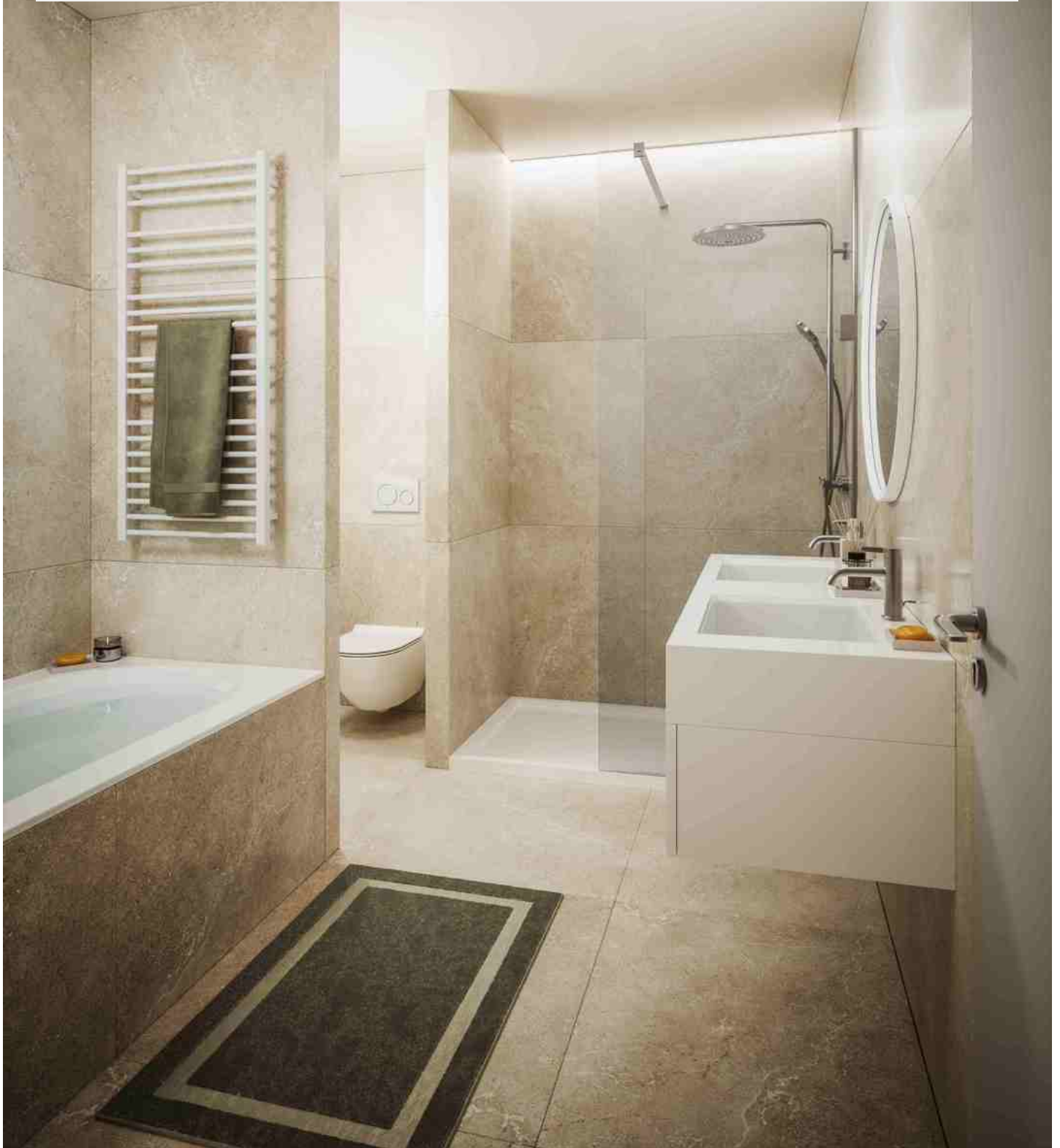
# THE STANDING ANTHEA PROJECT OVERLOOKS VAL DUCHESSÉ!

545 000 €

Ref 7677465

Auderghem - Apartment 980 sq ft

**VANEAU  
LECOBEL**  
Real Estate Brussels





## **VANEAU**

Immobilier de prestige depuis  
1972

### **VANEAU LOCATION**

Une équipe dédiée à Paris,  
Neuilly et Boulogne

### **VANEAU VIAGER**

30 ans d'expérience en vente  
viagère

# **VANEAU**

## **C'EST AUSSI**

### **VANEAU BUREAUX & COMMERCES**

+10 000 offres disponibles

### **VANEAU PATRIMOINE**

Dispositifs de défiscalisation,  
SCPI, Assurances Vie

### **VANEAU DIGITAL NEUF**

La plate-forme digitale 100%  
immobilier neuf

### **COURTAGE CRÉDITS**

Exell Crédit immobiliers  
Assurances emprunteurs

### **GESTION LOCATIVE**

GTF, plus de 7 000 lots gérés à  
Paris

**140 collaborateurs**

**1200 signatures par an**

**1000 immeubles par an**

**2.5 milliards d'actifs gérés**