

# MOLIÈRE : BEAUTIFUL 1-BEDROOM APARTMENT + MULTIPURPOSE SPACE

1 200 €

Ref 7668157

Forest - Apartment 829 sq ft

**VANEAU  
LECOBEL**  
Real Estate Brussels



## About this property

At the intersection of Avenue Molière and Avenue Brugmann, a beautiful, renovated apartment of approximately 77 m<sup>2</sup> in a residential building. It comprises an entrance hall with a cloakroom and separate WC, a bright living/dining room (approximately 25 m<sup>2</sup>), a fitted kitchen, a lovely bedroom (approximately 15 m<sup>2</sup>), an office (approximately 13 m<sup>2</sup>), and a shower room with a laundry area. A closed garage and an additional outdoor parking space are available for an extra €150/month. The apartment features a security door, double-glazed windows, parquet flooring, and new insulation. Monthly charges: €150 (provision for heating, hot water, and maintenance of common areas). Energy Performance Certificate (EPC) rating: D. Don't miss out! Contact Vaneau Lecobel today!

VANEAU LECOBEL

RENTALS

Georges Brugmann square

10B, 1050 Ixelles

ph +32 2 340 72 85

✉ [rent@vaneau-lecobel.be](mailto:rent@vaneau-lecobel.be)

**Reference :** 7668157

**Price :** 1 200 €

**Surface :** 829 sq ft

**Bedroom(s) :** 1

**Floor :** 4

**Bathroom(s) :** 1

**Shower room(s) :** 1

**Elevator :** Yes

**Loads :** 150 €

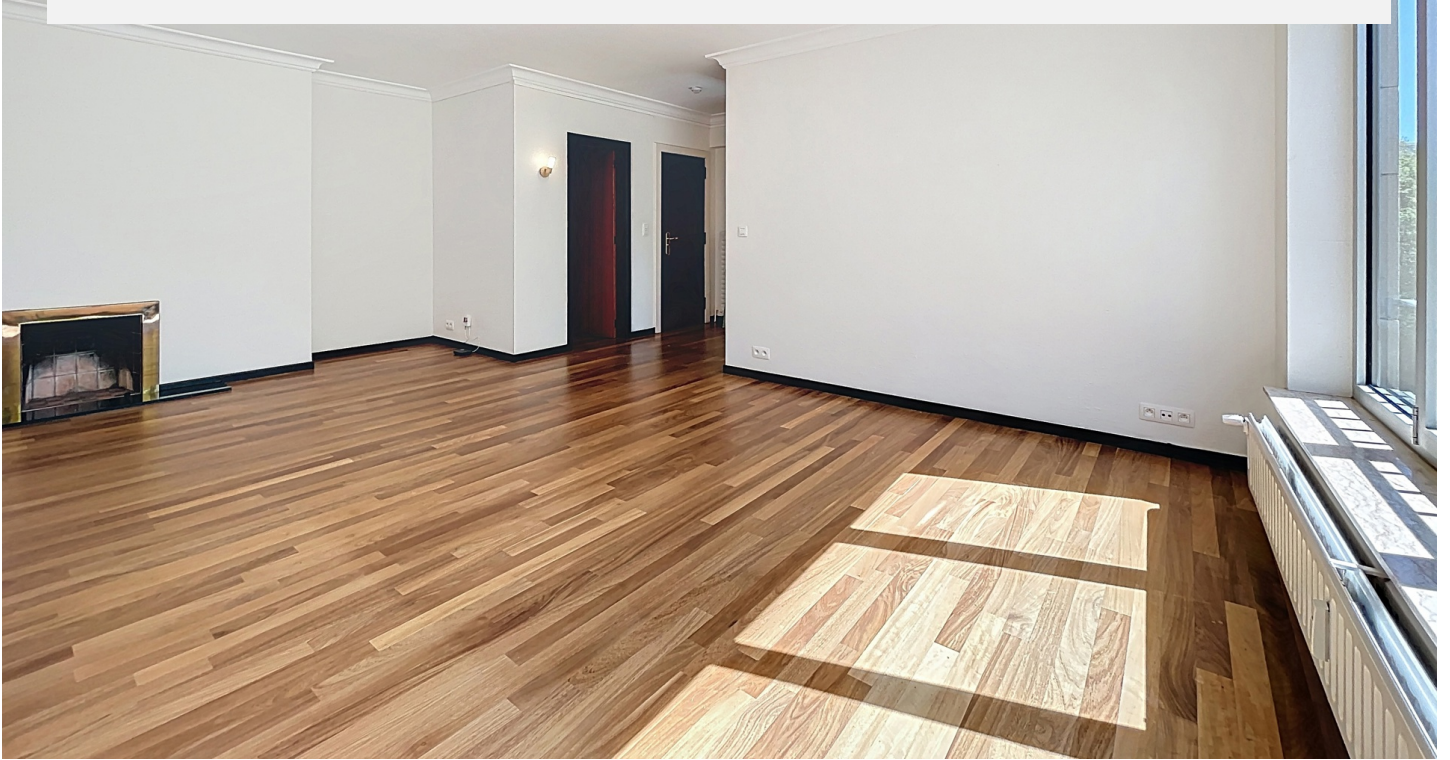
# MOLIÈRE : BEAUTIFUL 1-BEDROOM APARTMENT + MULTIPURPOSE SPACE

1 200 €

Ref 7668157

Forest - Apartment 829 sq ft

**VANEAU  
LECOBEL**  
Real Estate Brussels





# MOLIÈRE : BEAUTIFUL 1-BEDROOM APARTMENT + MULTIPURPOSE SPACE

1 200 €

Ref 7668157

Forest - Apartment 829 sq ft

**VANEAU  
LECOBEL**  
Real Estate Brussels





## **VANEAU**

Immobilier de prestige depuis  
1972

### **VANEAU LOCATION**

Une équipe dédiée à Paris,  
Neuilly et Boulogne

### **VANEAU VIAGER**

30 ans d'expérience en vente  
viagère

# **VANEAU**

## **C'EST AUSSI**

### **VANEAU BUREAUX & COMMERCES**

+10 000 offres disponibles

### **VANEAU PATRIMOINE**

Dispositifs de défiscalisation,  
SCPI, Assurances Vie

### **VANEAU DIGITAL NEUF**

La plate-forme digitale 100%  
immobilier neuf

### **COURTAGE CRÉDITS**

Exell Crédit immobiliers  
Assurances emprunteurs

### **GESTION LOCATIVE**

GTF, plus de 7 000 lots gérés à  
Paris

**140 collaborateurs**

**1200 signatures par an**

**1000 immeubles par an**

**2.5 milliards d'actifs gérés**