

PL. BRUGMANN/LEPOUTRE: SUPERB GROUND FLOOR APARTMENT

1 800 €

Ref 7656751

Ixelles - Apartment 1184 sq ft

**VANEAU
LECOBEL**
Real Estate Brussels



About this property

Near Avenue Louis Lepoutre and Place Brugmann, a superb ground-floor apartment with a total surface area of approximately 110 m² in a residence renovated in 2020. It comprises an entrance hall with a cloakroom and WC, a spacious living room (approximately 17.60 m²), a fully equipped open-plan kitchen, and two lovely bedrooms (approximately 15.40 m² and 18 m²), each with its own en-suite bathroom (one with a full bathroom and one with a shower). A terrace is accessible from one of the bedrooms. A cellar is included. The apartment benefits from a security door, a video intercom system, and double glazing. Bicycle storage and stroller storage are also available. Monthly charges: €100 (provision for the maintenance of common areas). Energy Performance Certificate (EPC) rating: D. Don't miss this opportunity!

VANEAU LECOBEL
RENTALS

Georges Brugmann square
10B, 1050 Ixelles
ph +32 2 340 72 85

✉ rent@vaneau-lecobel.be

Reference : 7656751

Price : 1 800 €

Surface : 1184 sq ft

Bedroom(s) : 2

Floor : 0

Bathroom(s) : 2

Shower room(s) : 2

Cellar : Yes

Elevator : Yes

Terrace : Yes

Loads : 100 €

Availabili 01/06/2026 -
ty : 12:00

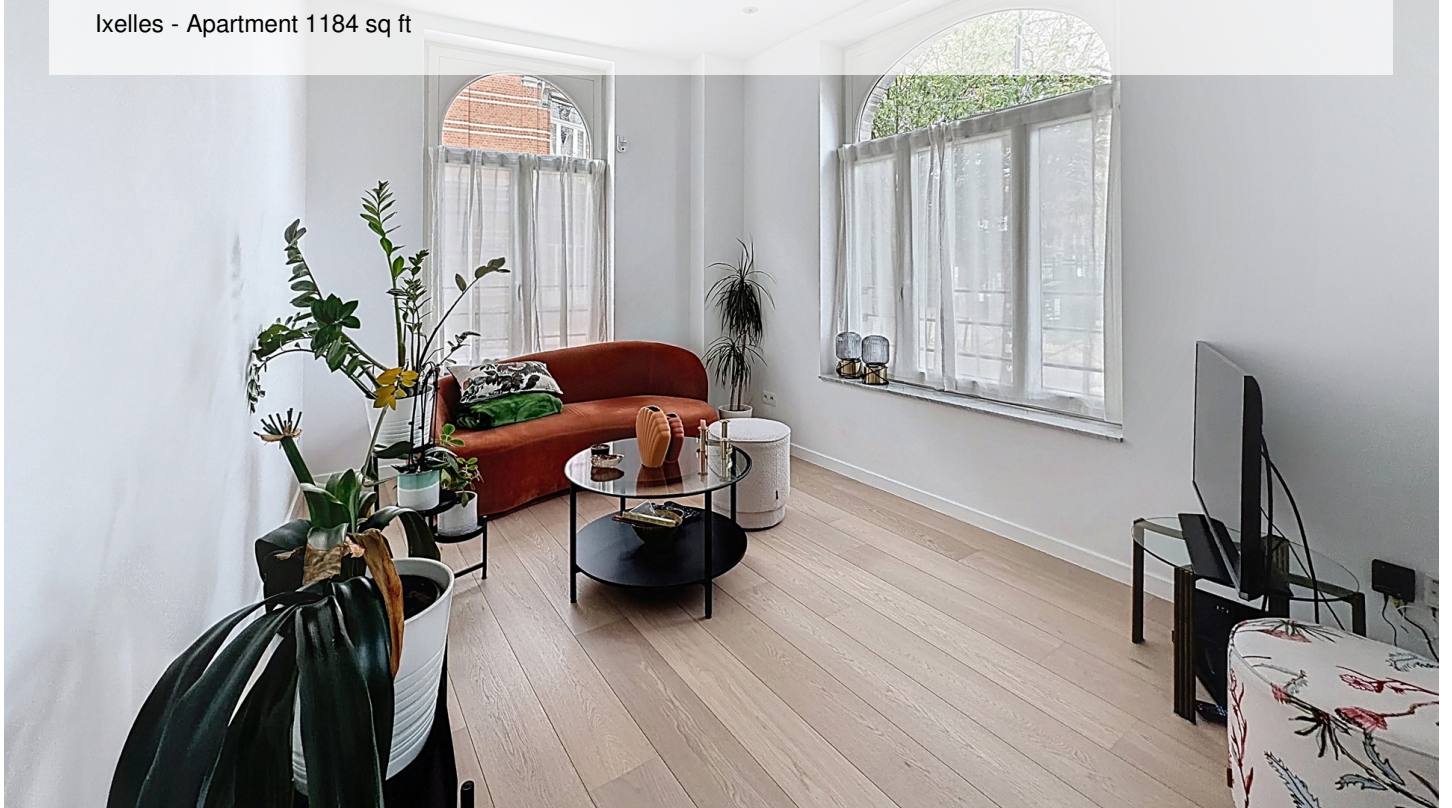
PL. BRUGMANN/LEPOUTRE: SUPERB GROUND FLOOR APARTMENT

1 800 €

Ref 7656751

Ixelles - Apartment 1184 sq ft

**VANEAU
LECOBEL**
Real Estate Brussels





PL. BRUGMANN/LEPOUTRE: SUPERB GROUND FLOOR APARTMENT

1 800 €

Ref 7656751

Ixelles - Apartment 1184 sq ft

**VANEAU
LECOBEL**
Real Estate Brussels





VANEAU

Immobilier de prestige depuis
1972

VANEAU LOCATION

Une équipe dédiée à Paris,
Neuilly et Boulogne

VANEAU VIAGER

30 ans d'expérience en vente
viagère

VANEAU

C'EST AUSSI

VANEAU BUREAUX & COMMERCES

+10 000 offres disponibles

VANEAU PATRIMOINE

Dispositifs de défiscalisation,
SCPI, Assurances Vie

VANEAU DIGITAL NEUF

La plate-forme digitale 100%
immobilier neuf

COURTAGE CRÉDITS

Exell Crédit immobiliers
Assurances emprunteurs

GESTION LOCATIVE

GTF, plus de 7 000 lots gérés à
Paris

140 collaborateurs

1200 signatures par an

1000 immeubles par an

2.5 milliards d'actifs gérés