

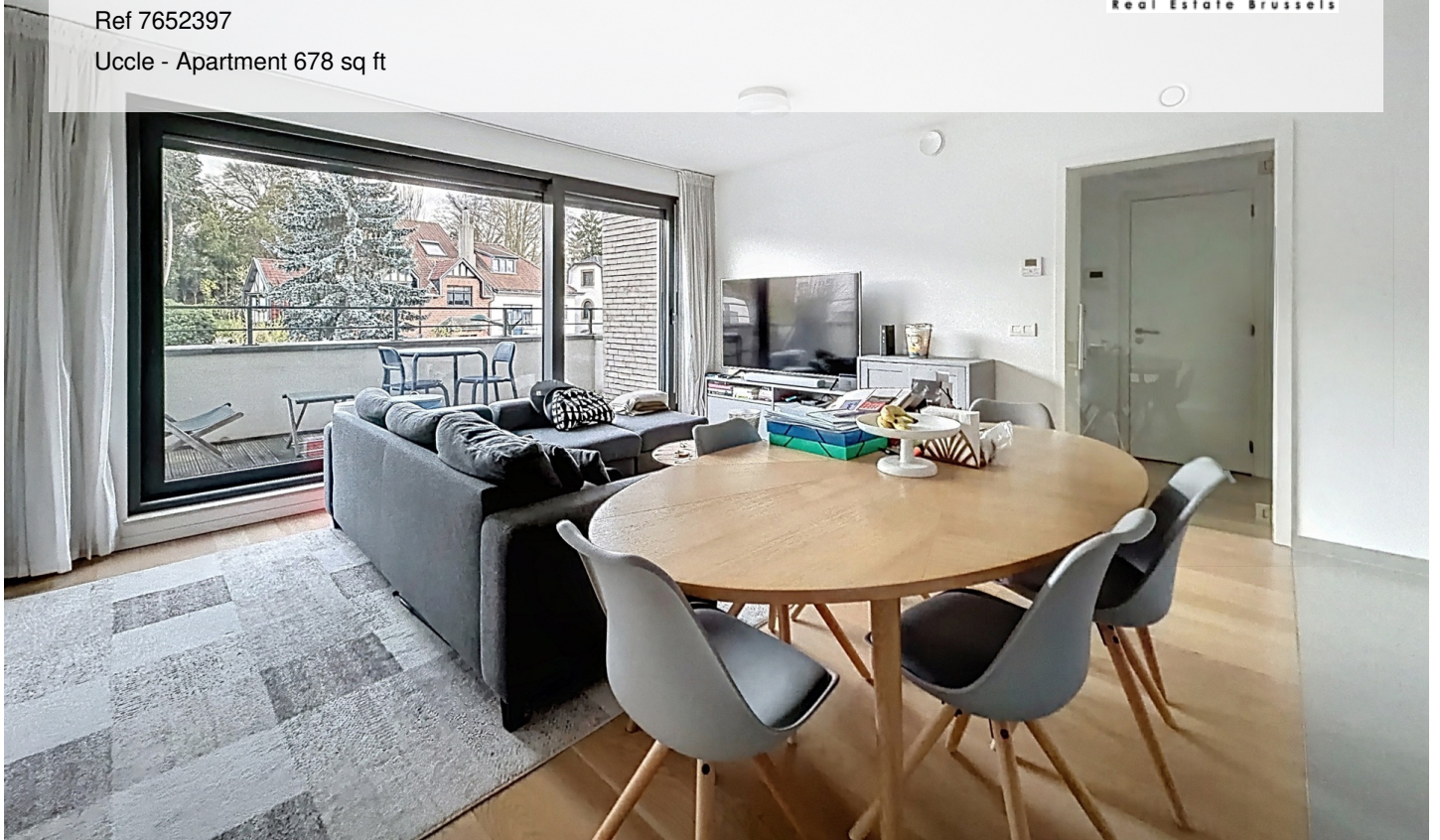
# PLACE SAINT-JOB: BEAUTIFUL MODERN APARTMENT + SOUTH TERRACE

1 300 €

Ref 7652397

Uccle - Apartment 678 sq ft

**VANEAU  
LECOBEL**  
Real Estate Brussels



## About this property

Between Place Saint-Job and Vivier d'Oie, a beautiful, modern apartment with a total surface area of approximately 63 m<sup>2</sup> is available in the Faubourg Saint-Job building, constructed in 2018. It comprises an entrance hall with a separate WC, a bright and attractive living room (approximately 20.10 m<sup>2</sup>), a fully equipped open-plan kitchen (Miele appliances), a lovely bedroom (approximately 14.15 m<sup>2</sup>), and a shower room. A pleasant south-facing terrace (approximately 8 m<sup>2</sup>) is located at the front of the apartment. A cellar is included, and an indoor parking space is available for an additional mandatory fee (€100/month). The apartment features a security door, double glazing, hardwood floors, a heat pump, and high-quality materials. Several pieces of furniture can be purchased from the tenant. Monthly charges: €80 (provision for the maintenance of common areas and the elevator). Energy Performance Certificate (EPC): B+. Discover it as soon as possible at Vaneau Lecobel!!

VANEAU LECOBEL  
RENTALS

Georges Brugmann square  
10B, 1050 Ixelles  
ph +32 2 340 72 85

✉ [rent@vaneau-lecobel.be](mailto:rent@vaneau-lecobel.be)

**Reference :** 7652397

**Price :** 1 300 €

**Surface :** 678 sq ft

**Bedroom(s) :** 1

**Floor :** 2

**Bathroom(s) :** 1

**Shower room(s) :** 1

**Cellar :** Yes

**Elevator :** Yes

**Parking(s) :** 1

**Terrace :** Yes

**Loads :** 80 €

---

**Availability :** 01/07/2026 -

12:00

# PLACE SAINT-JOB: BEAUTIFUL MODERN APARTMENT + SOUTH TERRACE

1 300 €

Ref 7652397

Uccle - Apartment 678 sq ft

**VANEAU  
LECOBEL**  
Real Estate Brussels





PLACE SAINT-JOB: BEAUTIFUL MODERN APARTMENT  
+ SOUTH TERRACE

1 300 €

Ref 7652397

Uccle - Apartment 678 sq ft

VANEAU  
LECOBEL  
Real Estate Brussels





## **VANEAU**

Immobilier de prestige depuis  
1972

### **VANEAU LOCATION**

Une équipe dédiée à Paris,  
Neuilly et Boulogne

### **VANEAU VIAGER**

30 ans d'expérience en vente  
viagère

# **VANEAU C'EST AUSSI**

### **VANEAU BUREAUX & COMMERCES**

+10 000 offres disponibles

### **VANEAU PATRIMOINE**

Dispositifs de défiscalisation,  
SCPI, Assurances Vie

### **VANEAU DIGITAL NEUF**

La plate-forme digitale 100%  
immobilier neuf

### **COURTAGE CRÉDITS**

Exell Crédit immobiliers  
Assurances emprunteurs

### **GESTION LOCATIVE**

GTF, plus de 7 000 lots gérés à  
Paris

**140 collaborateurs**

**1200 signatures par an**

**1000 immeubles par an**

**2.5 milliards d'actifs gérés**