

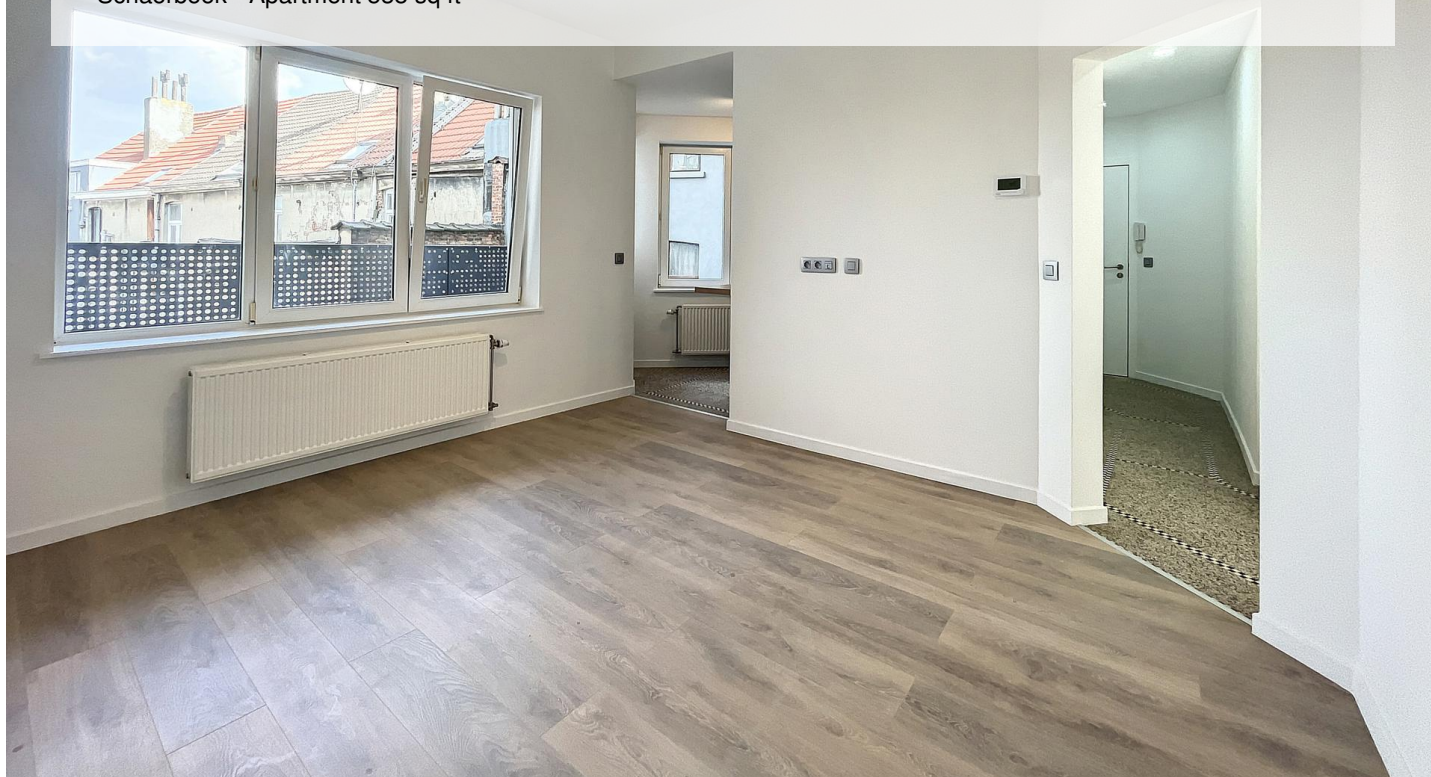
BOULEVARD LAMBERMONT – RENOVATED 1-BDR APARTMENT + TERRACE

970 €

Ref 7651098

Schaerbeek - Apartment 538 sq ft

**VANEAU
LECOBEL**
Real Estate Brussels



About this property

Close to Boulevard Lambermont and Docks Bruxelles, this superb new apartment offers approximately 50 m² of gross living space in a charming building. It comprises an entrance hall, a pleasant living room with a semi-open kitchen (approximately 17 m²), a bedroom (approximately 13 m²), a shower room, and a separate toilet. A lovely terrace (approximately 6 m²) completes the property. Additional features include hardwood floors, double-glazed PVC windows, and a cellar. Available from June 7th. Monthly charges: €100 (provision for water and maintenance of common areas). Energy Performance Certificate (EPC) rating: C. Don't miss out, contact Vanneau Lecobel today!

VANEAU LECOBEL
BRUSSELS EAST
200 , Belliardstreet - 1000
Brussels
ph +32 2 669 70 90
✉ est@vaneau-lecobel.be

Reference : 7651098

Price : 970 €

Surface : 538 sq ft

Bedroom(s) : 1

Floor : 3

Bathroom(s) : 1

Shower room(s) : 1

Cellar : Yes

Elevator : Yes

Terrace : Yes

Loads : 50 €

Availability : 07/06/2026 -
12:00

BOULEVARD LAMBERMONT – RENOVATED 1-BDR APARTMENT + TERRACE

970 €

Ref 7651098

Schaerbeek - Apartment 538 sq ft

**VANEAU
LECOBEL**
Real Estate Brussels





BOULEVARD LAMBERMONT – RENOVATED 1-BDR APARTMENT + TERRACE

970 €

Ref 7651098

Schaerbeek - Apartment 538 sq ft

**VANEAU
LECOBEL**
Real Estate Brussels





VANEAU

Immobilier de prestige depuis
1972

VANEAU LOCATION

Une équipe dédiée à Paris,
Neuilly et Boulogne

VANEAU VIAGER

30 ans d'expérience en vente
viagère

VANEAU

C'EST AUSSI

VANEAU BUREAUX & COMMERCES

+10 000 offres disponibles

VANEAU PATRIMOINE

Dispositifs de défiscalisation,
SCPI, Assurances Vie

VANEAU DIGITAL NEUF

La plate-forme digitale 100%
immobilier neuf

COURTAGE CRÉDITS

Exell Crédit immobiliers
Assurances emprunteurs

GESTION LOCATIVE

GTF, plus de 7 000 lots gérés à
Paris

140 collaborateurs

1200 signatures par an

1000 immeubles par an

2.5 milliards d'actifs gérés