

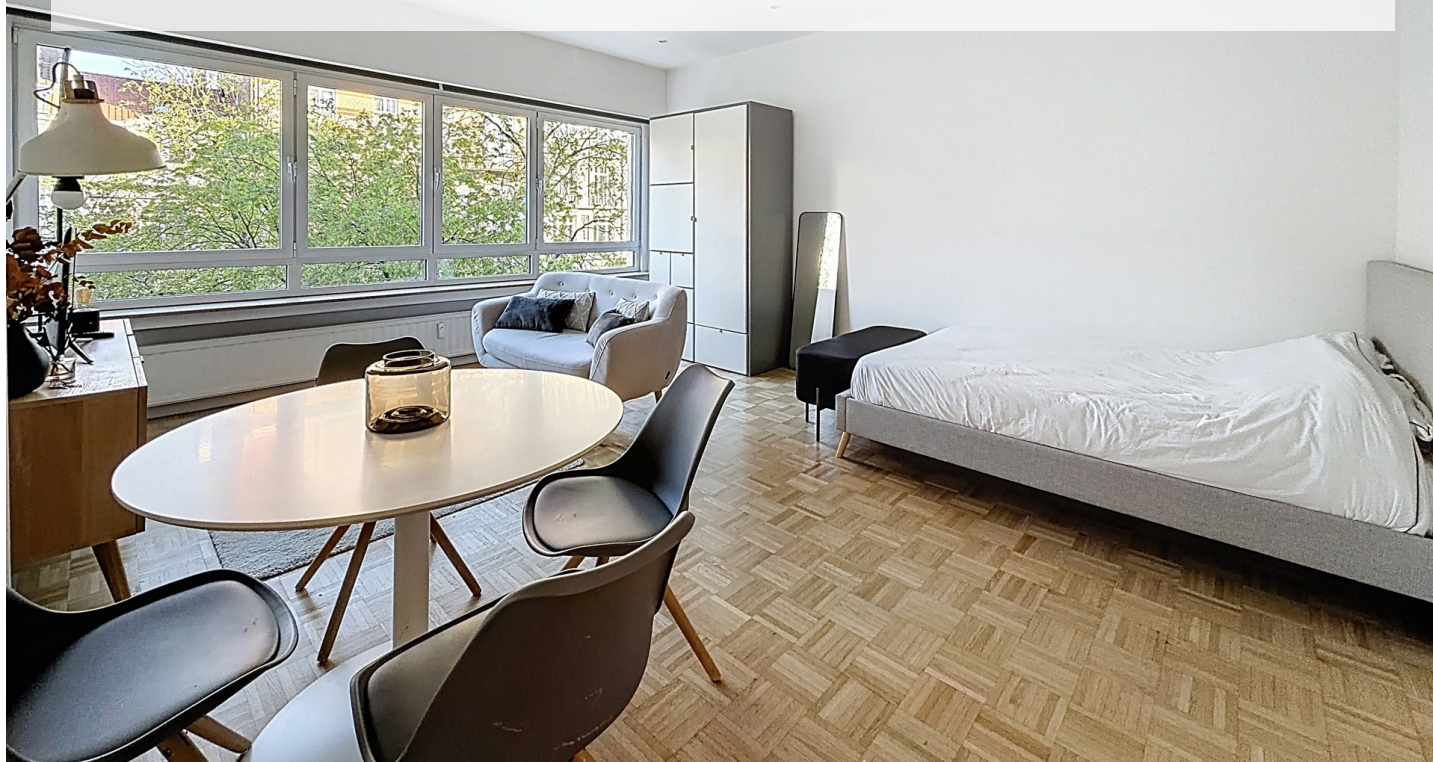
# LEPOUTRE / PL. BRUGMANN: BEAUTIFUL FURNISHED STUDIO

1 200 €

Ref 7648929

Ixelles - Apartment 431 sq ft

**VANEAU  
LECOBEL**  
Real Estate Brussels



## About this property

On the prestigious Avenue Louis Lepoutre and in the immediate vicinity of Place Brugmann, a superb furnished studio apartment of approximately 40 m<sup>2</sup> is available in a 1960s building. It comprises an entrance hall with a cloakroom, a bright living room with a sleeping area (approximately 23.65 m<sup>2</sup>), a fully equipped kitchen (approximately 3.60 m<sup>2</sup>), and a shower room. A cellar is included in the first basement level. The studio features a security door, double glazing, and parquet flooring. Monthly charges: €210 (provision for heating, hot water, and maintenance of common areas). Energy Performance Certificate (EPC) rating: C. Don't miss this opportunity! Contact Vaneau Lecobel today!

VANEAU LECOBEL  
RENTALS

Georges Brugmann square  
10B, 1050 Ixelles  
ph +32 2 340 72 85

✉ [rent@vaneau-lecobel.be](mailto:rent@vaneau-lecobel.be)

**Reference :** 7648929

**Price :** 1 200 €

**Surface :** 431 sq ft

**Bedroom(s) :** 0

**Floor :** 3

**Bathroom(s) :** 1

**Shower room(s) :** 1

**Cellar :** Yes

**Elevator :** Yes

**Loads :** 210 €

LEPOUTRE / PL. BRUGMANN: BEAUTIFUL FURNISHED  
STUDIO

1 200 €

Ref 7648929

Ixelles - Apartment 431 sq ft

VANEAU  
LECOBEL  
Real Estate Brussels





# LEPOUTRE / PL. BRUGMANN: BEAUTIFUL FURNISHED STUDIO

1 200 €

Ref 7648929

Ixelles - Apartment 431 sq ft

**VANEAU  
LECOBEL**  
Real Estate Brussels





## **VANEAU**

Immobilier de prestige depuis  
1972

### **VANEAU LOCATION**

Une équipe dédiée à Paris,  
Neuilly et Boulogne

### **VANEAU VIAGER**

30 ans d'expérience en vente  
viagère

# **VANEAU C'EST AUSSI**

### **VANEAU BUREAUX & COMMERCES**

+10 000 offres disponibles

### **VANEAU PATRIMOINE**

Dispositifs de défiscalisation,  
SCPI, Assurances Vie

### **VANEAU DIGITAL NEUF**

La plate-forme digitale 100%  
immobilier neuf

### **COURTAGE CRÉDITS**

Exell Crédit immobiliers  
Assurances emprunteurs

### **GESTION LOCATIVE**

GTF, plus de 7 000 lots gérés à  
Paris

**140 collaborateurs**

**1200 signatures par an**

**1000 immeubles par an**

**2.5 milliards d'actifs gérés**