

# AVENUE MOLIÈRE - SPLENDID 3 BEDROOM APARTMENT + TERRACE

3 800 €

Ref 7638905

Ixelles - Apartment 2616 sq ft

**VANEAU  
LECOBEL**  
Real Estate Brussels



## About this property

On the prestigious Avenue Molière, a luxurious, characterful apartment, fully renovated in 2012, offers approximately 243 m<sup>2</sup> of living space in a magnificent 1905 townhouse. It comprises an entrance hall with a lift, cloakroom, and separate WC; a spacious and bright living room (approximately 70 m<sup>2</sup>) opening onto a dining room (three adjoining rooms); a large, fully equipped kitchen; a large hallway; three beautiful bedrooms (approximately 24 m<sup>2</sup>, 17 m<sup>2</sup>, and 16 m<sup>2</sup>); a bathroom; and a shower room. There are lovely terraces at the front and rear. A cellar is included, and a parking space is available at an additional cost of €100/month. Monthly charges are €235 (€50 provision for water and a fixed charge of €185 for the maintenance of common areas). Energy Performance Certificate (EPC) rating: C-. Discover it as soon as possible!!

VANEAU LECOBEL  
RENTALS

Georges Brugmann square  
10B, 1050 Ixelles  
ph +32 2 340 72 85

✉ [rent@vaneau-lecobel.be](mailto:rent@vaneau-lecobel.be)

**Reference :** 7638905

**Price :** 3 800 €

**Surface :** 2616 sq ft

**Bedroom(s) :** 3

**Floor :** 2

**Bathroom(s) :** 2

**Shower room(s) :** 1

**Cellar :** Yes

**Elevator :** Yes

**Parking(s) :** 1

**Terrace :** Yes

**Loads :** 235 €

---

**Availability :** 01/07/2026 -

12:00

# AVENUE MOLIÈRE - SPLENDID 3 BEDROOM APARTMENT + TERRACE

3 800 €

Ref 7638905

Ixelles - Apartment 2616 sq ft

**VANEAU  
LECOBEL**  
Real Estate Brussels





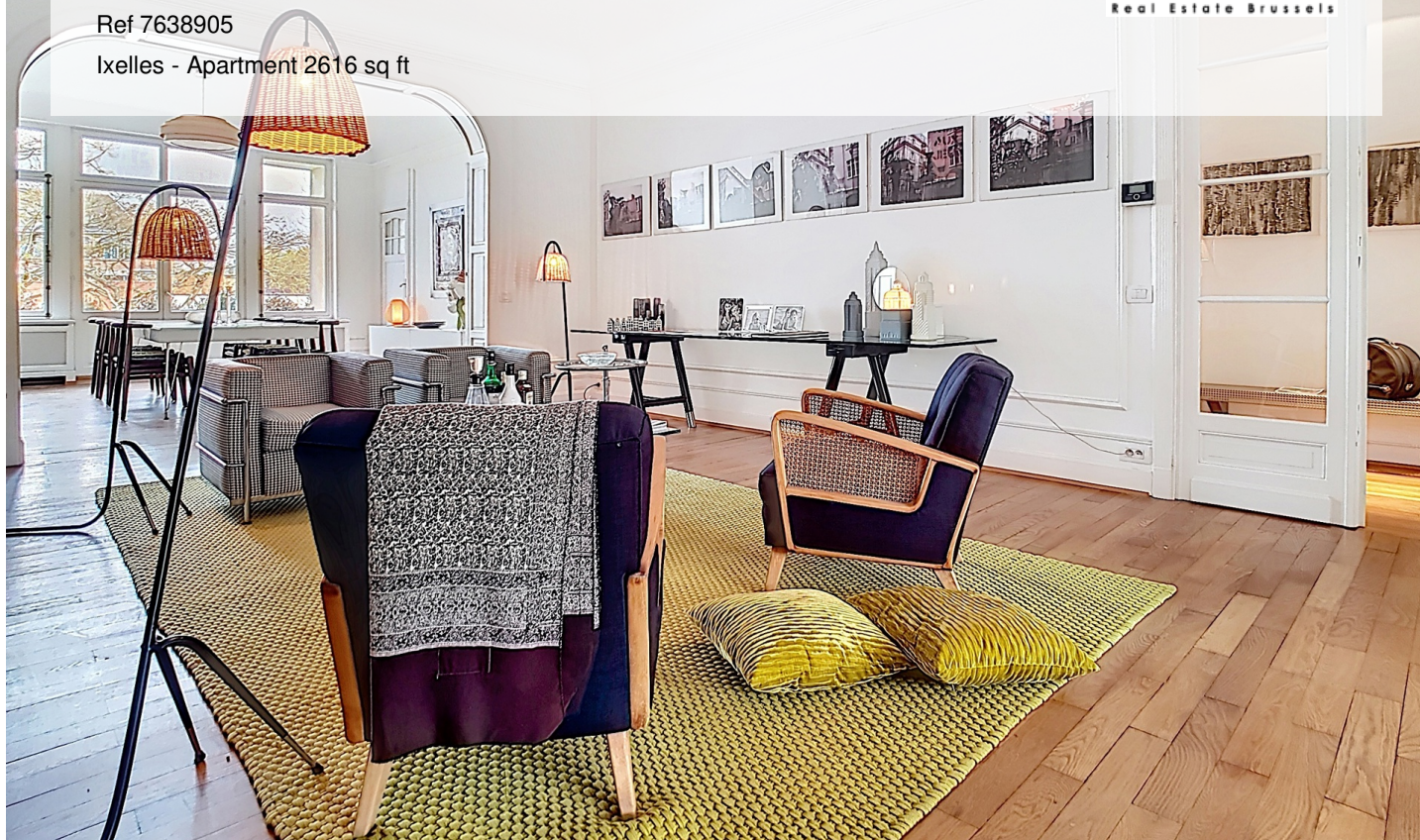
# AVENUE MOLIÈRE - SPLENDID 3 BEDROOM APARTMENT + TERRACE

3 800 €

Ref 7638905

Ixelles - Apartment 2616 sq ft

**VANEAU  
LECOBEL**  
Real Estate Brussels





## **VANEAU**

Immobilier de prestige depuis  
1972

### **VANEAU LOCATION**

Une équipe dédiée à Paris,  
Neuilly et Boulogne

### **VANEAU VIAGER**

30 ans d'expérience en vente  
viagère

# **VANEAU**

## **C'EST AUSSI**

### **VANEAU BUREAUX & COMMERCES**

+10 000 offres disponibles

### **VANEAU PATRIMOINE**

Dispositifs de défiscalisation,  
SCPI, Assurances Vie

### **VANEAU DIGITAL NEUF**

La plate-forme digitale 100%  
immobilier neuf

### **COURTAGE CRÉDITS**

Exell Crédit immobiliers  
Assurances emprunteurs

### **GESTION LOCATIVE**

GTF, plus de 7 000 lots gérés à  
Paris

**140 collaborateurs**

**1200 signatures par an**

**1000 immeubles par an**

**2.5 milliards d'actifs gérés**