

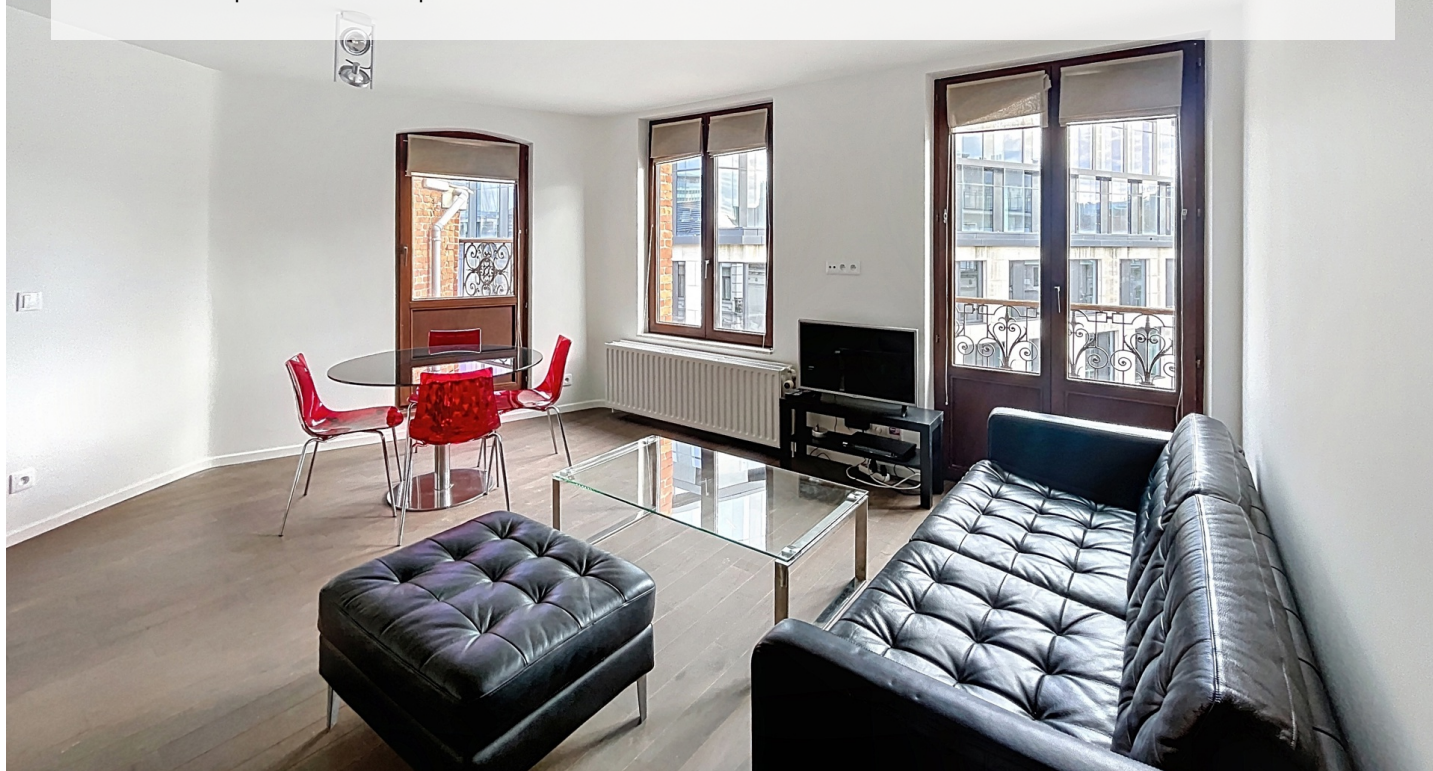
## CONGRESS / PARC ROYAL: SUPER FURNISHED 2 BEDROOM APARTMENT

1 550 €

Ref 7643917

Bruxelles - Apartment 1098 sq ft

**VANEAU  
LECOBEL**  
Real Estate Brussels



### About this property

Ideally located between the Congrès and the Parc Royal, superb furnished 2-room apartment with a total surface area of  $\pm 102$  m<sup>2</sup> in a small condominium. It consists of a beautiful entrance hall with storage, a large and bright living room ( $\pm 35$  m<sup>2</sup>), a fully equipped open kitchen, 2 beautiful bedrooms ( $\pm 18$  m<sup>2</sup> and  $\pm 16$  m<sup>2</sup>), 2 bathrooms and an equipped laundry room. Pretty terrace accessible from the living room. Charges: €150/month (Provision for the maintenance of common areas). PEB G. To discover exclusively at Vaneau Lecobel!!

VANEAU LECOBEL  
BRUSSELS EAST  
200 , Belliardstreet - 1000  
Brussels  
ph +32 2 669 70 90  
✉ [est@vaneau-lecobel.be](mailto:est@vaneau-lecobel.be)

**Reference :** 7643917

**Price :** 1 550 €

**Surface :** 1098 sq ft

**Bedroom(s) :** 2

**Floor :** 4

**Bathroom(s) :** 2

**Shower room(s) :** 2

**Elevator :** Yes

**Terrace :** Yes

**Loads :** 150 €

# CONGRESS / PARC ROYAL: SUPER FURNISHED 2 BEDROOM APARTMENT

1 550 €

Ref 7643917

Bruxelles - Apartment 1098 sq ft

**VANEAU  
LECOBEL**  
Real Estate Brussels





# CONGRESS / PARC ROYAL: SUPER FURNISHED 2 BEDROOM APARTMENT

1 550 €

Ref 7643917

Bruxelles - Apartment 1098 sq ft

**VANEAU  
LECOBEL**  
Real Estate Brussels





## **VANEAU**

Immobilier de prestige depuis  
1972

### **VANEAU LOCATION**

Une équipe dédiée à Paris,  
Neuilly et Boulogne

### **VANEAU VIAGER**

30 ans d'expérience en vente  
viagère

# **VANEAU C'EST AUSSI**

### **VANEAU BUREAUX & COMMERCES**

+10 000 offres disponibles

### **VANEAU PATRIMOINE**

Dispositifs de défiscalisation,  
SCPI, Assurances Vie

### **VANEAU DIGITAL NEUF**

La plate-forme digitale 100%  
immobilier neuf

### **COURTAGE CRÉDITS**

Exell Crédit immobiliers  
Assurances emprunteurs

### **GESTION LOCATIVE**

GTF, plus de 7 000 lots gérés à  
Paris

**140 collaborateurs**

**1200 signatures par an**

**1000 immeubles par an**

**2.5 milliards d'actifs gérés**