

# HÉROS/BOETENDAEL: SUPERB 6-BEDROOM HOUSE + GARDEN

3 950 €

Ref 7642687

Uccle - House 3552 sq ft

**VANEAU  
LECOBEL**  
Real Estate Brussels



## About this property

Close to the Messidor district and the Parvis Saint-Pierre, superb house with a total surface area of  $\pm 330 \text{ m}^2$  built in 1976. It consists of a large entrance hall ( $\pm 11.50 \text{ m}^2$ ) with a separate WC, a large living room ( $\pm 46.20 \text{ m}^2$ ), a dining room ( $\pm 20.90 \text{ m}^2$ ), a fully equipped kitchen ( $\pm 12.25 \text{ m}^2$ ), a night hall, 6 beautiful bedrooms ( $\pm 17.40 \text{ m}^2$ ,  $\pm 15 \text{ m}^2$ ,  $\pm 18.15 \text{ m}^2$ ,  $\pm 20 \text{ m}^2$ ,  $\pm 19.50 \text{ m}^2$  and  $\pm 16.30 \text{ m}^2$ ), an office ( $\pm 17.90 \text{ m}^2$ ), 3 bathrooms and 1 shower room. Beautiful terrace ( $\pm 15 \text{ m}^2$ ) overlooking a vast east-facing garden. Large cellars, garage and two outdoor parking spaces. The house has beautiful spaces and double glazing. The house is ideally located near the French High School, shops and public transport (ideal for going to the Gare du Midi). All charges are individual. PEB C-. Discover it as soon as possible at Vaneau Lecobel!!

VANEAU LECOBEL  
RENTALS

Georges Brugmann square  
10B, 1050 Ixelles  
ph +32 2 340 72 85

✉ [rent@vaneau-lecobel.be](mailto:rent@vaneau-lecobel.be)

**Reference :** 7642687

**Price :** 3 950 €

**Surface :** 3552 sq ft

**Bedroom(s) :** 6

**Bathroom(s) :** 4

**Shower room(s) :** 1

**Garden :** Yes

**Cellar :** Yes

**Parking(s) :** 1

**Terrace :** Yes

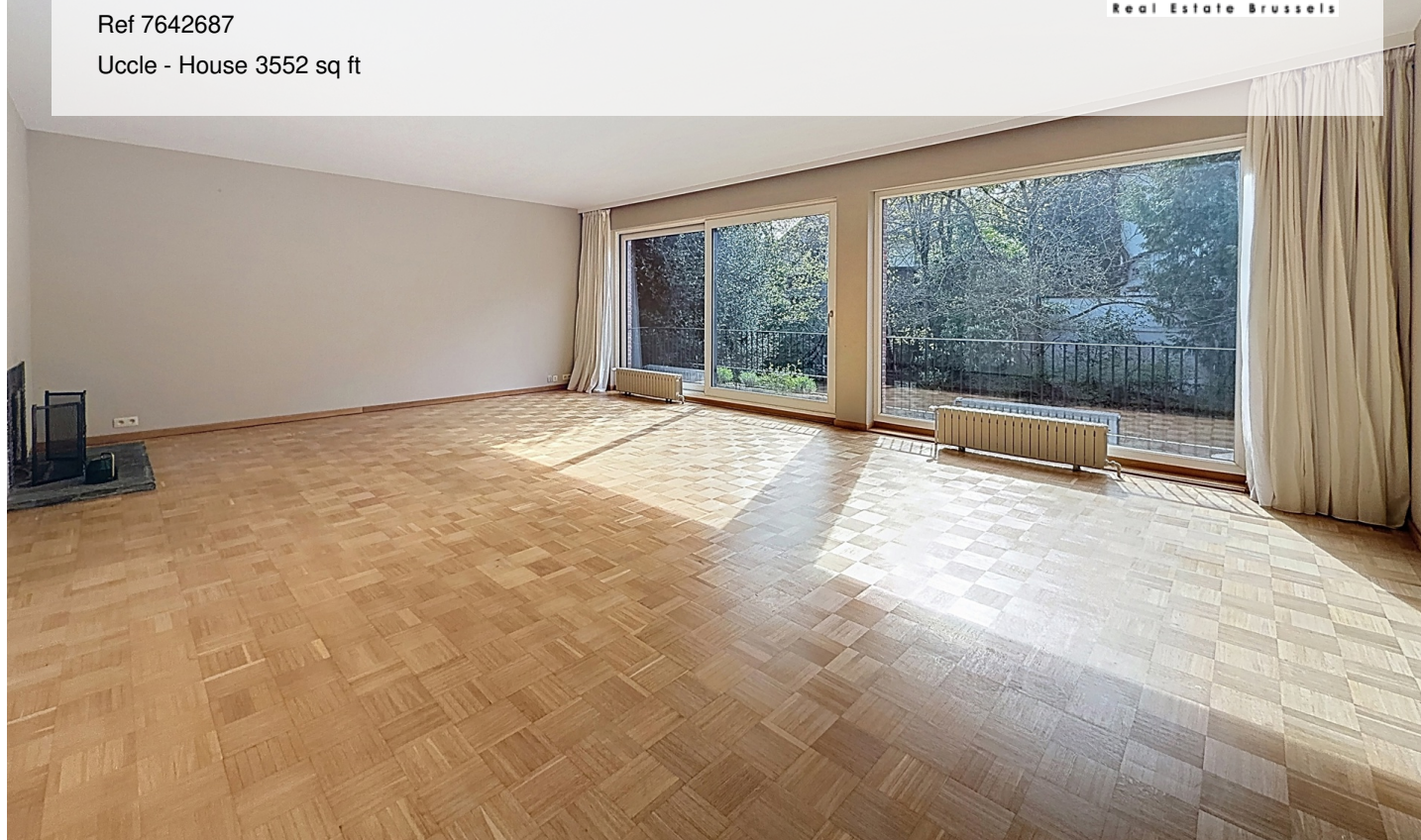
# HÉROS/BOETENDAEL: SUPERB 6-BEDROOM HOUSE + GARDEN

3 950 €

Ref 7642687

Uccle - House 3552 sq ft

**VANEAU  
LECOBEL**  
Real Estate Brussels





# HÉROS/BOETENDAEL: SUPERB 6-BEDROOM HOUSE + GARDEN

3 950 €

Ref 7642687

Uccle - House 3552 sq ft

**VANEAU  
LECOBEL**  
Real Estate Brussels





## **VANEAU**

Immobilier de prestige depuis  
1972

### **VANEAU LOCATION**

Une équipe dédiée à Paris,  
Neuilly et Boulogne

### **VANEAU VIAGER**

30 ans d'expérience en vente  
viagère

# **VANEAU**

## **C'EST AUSSI**

### **VANEAU BUREAUX & COMMERCES**

+10 000 offres disponibles

### **VANEAU PATRIMOINE**

Dispositifs de défiscalisation,  
SCPI, Assurances Vie

### **VANEAU DIGITAL NEUF**

La plate-forme digitale 100%  
immobilier neuf

### **COURTAGE CRÉDITS**

Exell Crédit immobiliers  
Assurances emprunteurs

### **GESTION LOCATIVE**

GTF, plus de 7 000 lots gérés à  
Paris

**140 collaborateurs**

**1200 signatures par an**

**1000 immeubles par an**

**2.5 milliards d'actifs gérés**