

UCCLE: SPLENDID 4-BEDROOM HOUSE WITH GARDEN AND TERRACES

3 500 €

Ref 7642612

Uccle - House 2820 sq ft

**VANEAU
LECOBEL**
Real Estate Brussels



About this property

Between Avenue de Messidor and Brugmann Park, a splendid architect-designed house with a total surface area of approximately 262 m², built in 1934. It comprises an entrance hall with a cloakroom and separate WC, a spacious and bright living room (approximately 40 m²), a dining room, a fully equipped kitchen, four beautiful bedrooms (approximately 24 m², 16 m², 15 m², and 15 m²), a dressing room, and two bathrooms. Two lovely terraces and a beautiful southeast-facing garden complete the property. A cellar with a laundry room is also included. All utilities are individually metered. Energy Performance Certificate (EPC) rating: G. Discover this property with Vaneau Lecobel!

VANEAU LECOBEL
RENTALS

Georges Brugmann square
10B, 1050 Ixelles
ph +32 2 340 72 85

✉ rent@vaneau-lecobel.be

Reference : 7642612

Price : 3 500 €

Surface : 2820 sq ft

Bedroom(s) : 4

Bathroom(s) : 2

Shower room(s) : 2

Garden : Yes

Cellar : Yes

Terrace : Yes

UCCLE: SPLENDID 4-BEDROOM HOUSE WITH GARDEN AND TERRACES

3 500 €

Ref 7642612

Uccle - House 2820 sq ft

**VANEAU
LECOBEL**
Real Estate Brussels





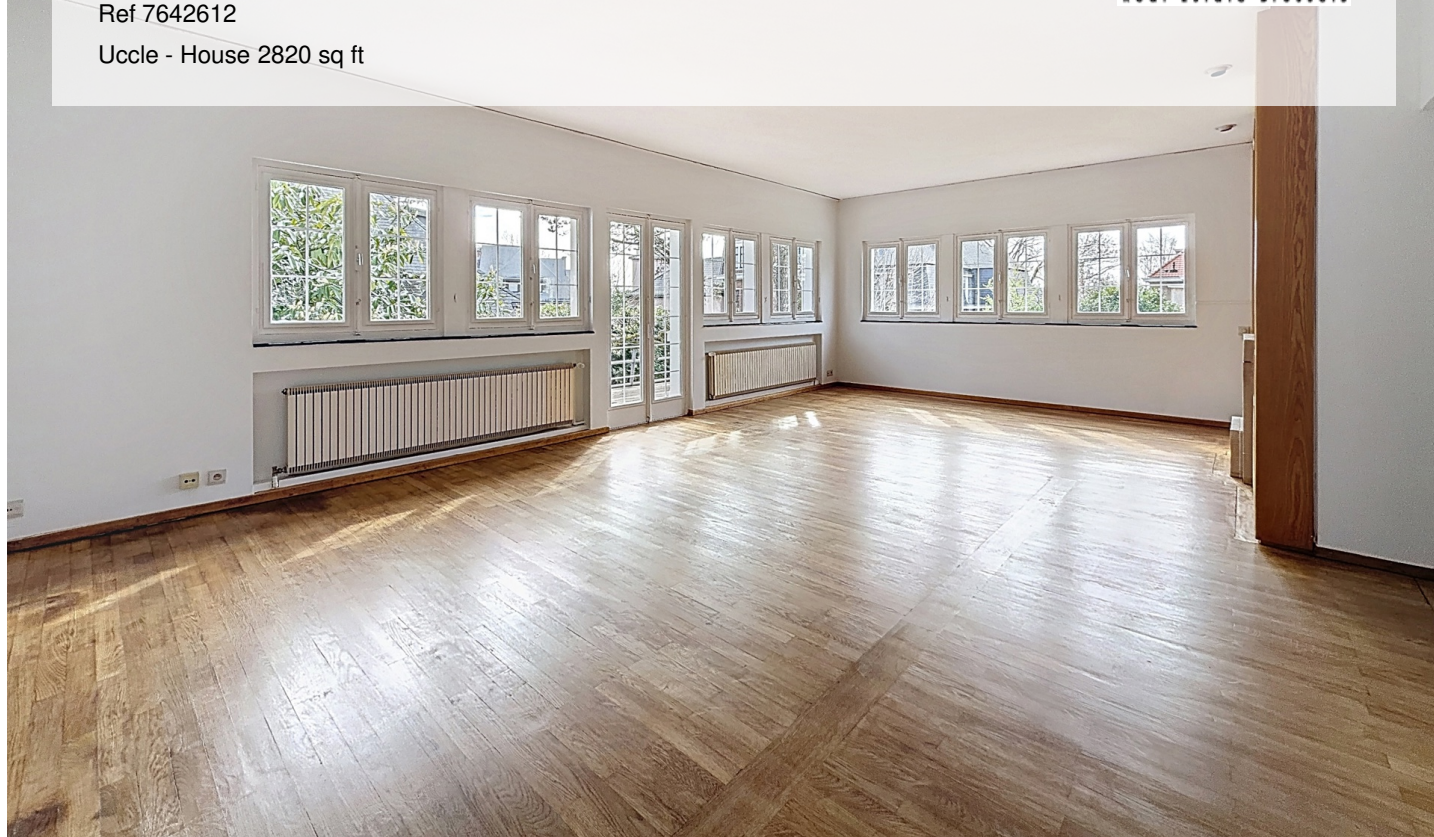
UCCLE: SPLENDID 4-BEDROOM HOUSE WITH GARDEN AND TERRACES

3 500 €

Ref 7642612

Uccle - House 2820 sq ft

**VANEAU
LECOBEL**
Real Estate Brussels





VANEAU

Immobilier de prestige depuis
1972

VANEAU LOCATION

Une équipe dédiée à Paris,
Neuilly et Boulogne

VANEAU VIAGER

30 ans d'expérience en vente
viagère

VANEAU

C'EST AUSSI

VANEAU BUREAUX & COMMERCES

+10 000 offres disponibles

VANEAU PATRIMOINE

Dispositifs de défiscalisation,
SCPI, Assurances Vie

VANEAU DIGITAL NEUF

La plate-forme digitale 100%
immobilier neuf

COURTAGE CRÉDITS

Exell Crédit immobiliers
Assurances emprunteurs

GESTION LOCATIVE

GTF, plus de 7 000 lots gérés à
Paris

140 collaborateurs

1200 signatures par an

1000 immeubles par an

2.5 milliards d'actifs gérés