

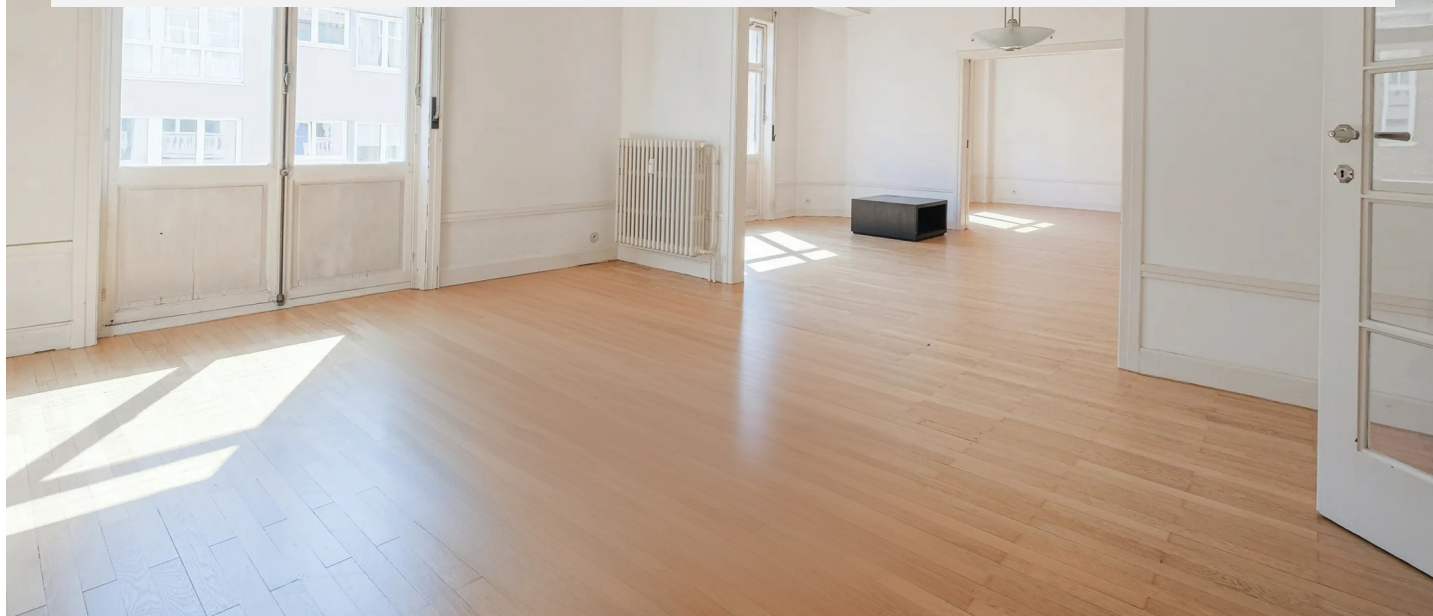
# PLACE BRUGMANN, BEAUTIFUL 4-BDR APARTMENT 223M<sup>2</sup> + TERRACE

895 000 €

Ref 7642347

Ixelles - Apartment 2400 sq ft

**VANEAU  
LECOBEL**  
Real Estate Brussels



## About this property

On the prestigious Place Brugmann, magnificent Art Deco style apartment of  $\hat{A}\pm 223$  m<sup>2</sup> gross with rear terrace. It is composed as follows: Large entrance hall, 4 bedrooms with bright living room of 45 m<sup>2</sup> or 3 bedrooms with bright living room of 75 m<sup>2</sup>, super-equipped kitchen of  $\hat{A}\pm 21$  m<sup>2</sup> with laundry room, breakfast area and terrace inside island of  $\hat{A}\pm 11$  m<sup>2</sup>, guest toilet, night hall with storage cupboards, first front bedroom of  $\hat{A}\pm 23$  m<sup>2</sup>, bathroom with toilet of  $\hat{A}\pm 6$  m<sup>2</sup>, 2 bedrooms of  $\hat{A}\pm 9.8$  and  $\hat{A}\pm 9.7$  m<sup>2</sup>, master bedroom of  $\hat{A}\pm 20.5$  m<sup>2</sup> with adjoining shower room of  $\hat{A}\pm 4.5$  m<sup>2</sup>. Also: Elegant building with many well-preserved period details, several maids' rooms, two cellars, garage box in addition not mandatory, two maid's rooms, working open fire, water softener, individual boiler, security door, alarm system, PEB: F. A character apartment that will delight lovers of beautiful spaces. Not to be missed!!

VANEAU LECOBEL  
BRUSSELS SOUTH  
G. Brugmann Square 10B  
1050 Ixelles  
ph +32 2 346 33 55  
✉ [lecobel@vaneau-  
lecobel.be](mailto:lecobel@vaneau-lecobel.be)

**Reference :** 7642347

**Price :** 895 000 €

**Surface :** 2400 sq ft

**Bedroom(s) :** 4

**Floor :** 3

**Bathroom(s) :** 2

**Cellar :** Yes

**Elevator :** Yes

**Parking(s) :** 1

**Terrace :** Yes

**Availabili  
ty :** 29/04/2026 -  
12:00

PLACE BRUGMANN, BEAUTIFUL 4-BDR APARTMENT  
223M<sup>2</sup> + TERRACE

895 000 €

Ref 7642347

Ixelles - Apartment 2400 sq ft

VANEAU  
LECOBEL  
Real Estate Brussels





PLACE BRUGMANN, BEAUTIFUL 4-BDR APARTMENT  
223M<sup>2</sup> + TERRACE

895 000 €

Ref 7642347

Ixelles - Apartment 2400 sq ft

**VANEAU  
LECOBEL**  
Real Estate Brussels



## **VANEAU**

Immobilier de prestige depuis  
1972

### **VANEAU LOCATION**

Une équipe dédiée à Paris,  
Neuilly et Boulogne

### **VANEAU VIAGER**

30 ans d'expérience en vente  
viagère

# **VANEAU C'EST AUSSI**

### **VANEAU BUREAUX & COMMERCES**

+10 000 offres disponibles

### **VANEAU PATRIMOINE**

Dispositifs de défiscalisation,  
SCPI, Assurances Vie

### **VANEAU DIGITAL NEUF**

La plate-forme digitale 100%  
immobilier neuf

### **COURTAGE CRÉDITS**

Exell Crédit immobiliers  
Assurances emprunteurs

### **GESTION LOCATIVE**

GTF, plus de 7 000 lots gérés à  
Paris

**140 collaborateurs**

**1200 signatures par an**

**1000 immeubles par an**

**2.5 milliards d'actifs gérés**