

MONTJOIE: SUPERB CHARACTER APARTMENT

1 350 €

Ref 7627749

Uccle - Apartment 1055 sq ft

**VANEAU
LECOBEL**
Real Estate Brussels



About this property

On Avenue Montjoie, opposite the Bois de la Cambre, a magnificent apartment in perfect condition, with a total surface area of approximately 98 m², in a prestigious building. It comprises an entrance hall with a WC, a spacious and bright living room (approximately 30 m²), a fully equipped kitchen, a lovely bedroom (approximately 14 m²), an office or second bedroom (approximately 9 m²), and a bathroom. There are two cellars in the basement and a large maid's room on the 7th floor (approximately 9.50 m²). The apartment features a security door, hardwood floors, and double glazing. Monthly charges: €80 (provision for the maintenance of common areas). Energy Performance Certificate (EPC) rating: E+. Exclusively available through Vaneau Lecobel!

VANEAU LECOBEL

RENTALS

Georges Brugmann square

10B, 1050 Ixelles

ph +32 2 340 72 85

✉ rent@vaneau-lecobel.be

Reference : 7627749

Price : 1 350 €

Surface : 1055 sq ft

Bedroom(s) : 1

Floor : 2

Bathroom(s) : 1

Shower room(s) : 1

Cellar : Yes

Elevator : Yes

Terrace : Yes

Loads : 80 €

Availability : 05/07/2026 -
12:00

MONTJOIE: SUPERB CHARACTER APARTMENT

1 350 €

Ref 7627749

Uccle - Apartment 1055 sq ft

**VANEAU
LECOBEL**
Real Estate Brussels





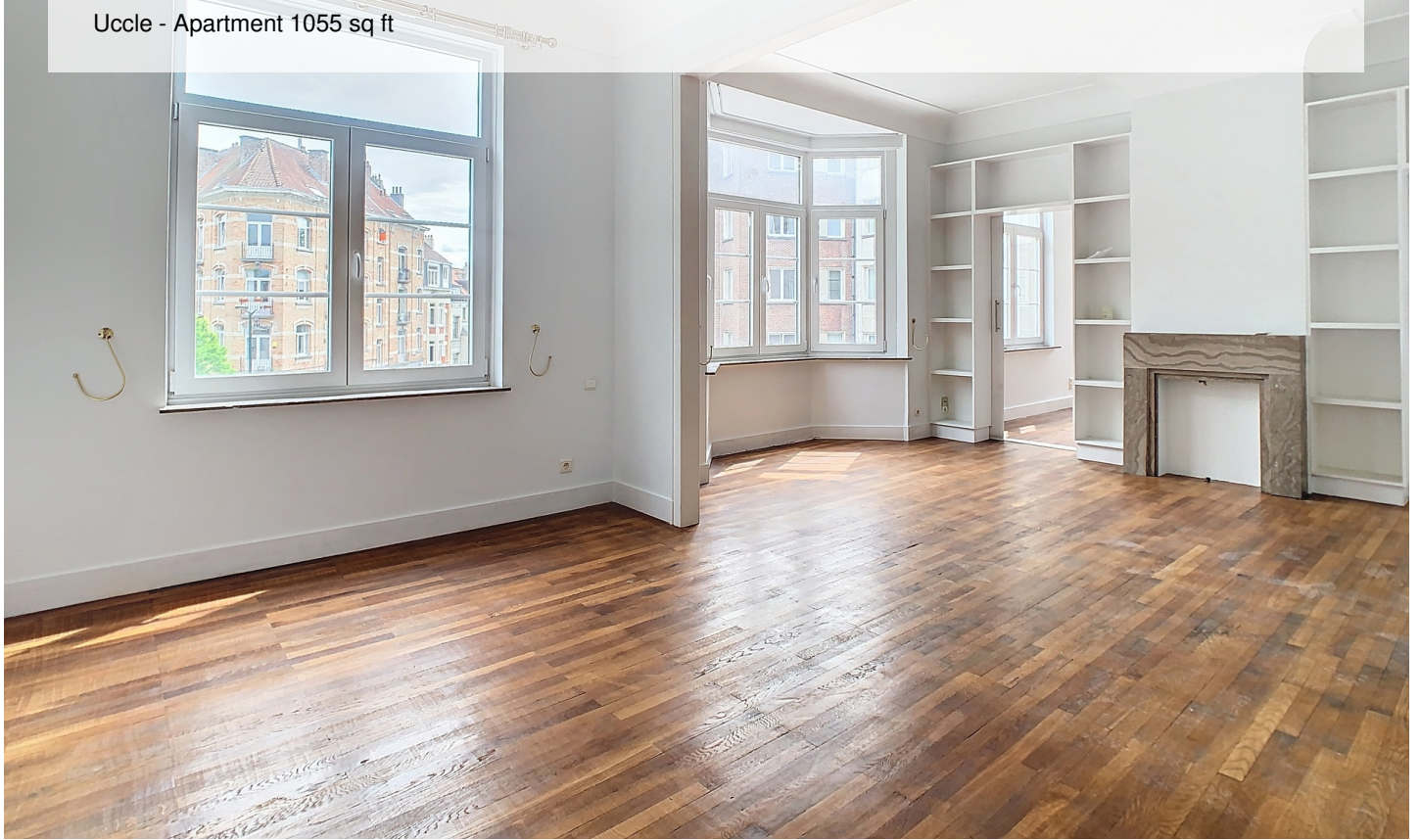
MONTJOIE: SUPERB CHARACTER APARTMENT

1 350 €

Ref 7627749

Uccle - Apartment 1055 sq ft

**VANEAU
LECOBEL**
Real Estate Brussels





VANEAU

Immobilier de prestige depuis
1972

VANEAU LOCATION

Une équipe dédiée à Paris,
Neuilly et Boulogne

VANEAU VIAGER

30 ans d'expérience en vente
viagère

VANEAU

C'EST AUSSI

VANEAU BUREAUX & COMMERCES

+10 000 offres disponibles

VANEAU PATRIMOINE

Dispositifs de défiscalisation,
SCPI, Assurances Vie

VANEAU DIGITAL NEUF

La plate-forme digitale 100%
immobilier neuf

COURTAGE CRÉDITS

Exell Crédit immobiliers
Assurances emprunteurs

GESTION LOCATIVE

GTF, plus de 7 000 lots gérés à
Paris

140 collaborateurs

1200 signatures par an

1000 immeubles par an

2.5 milliards d'actifs gérés