

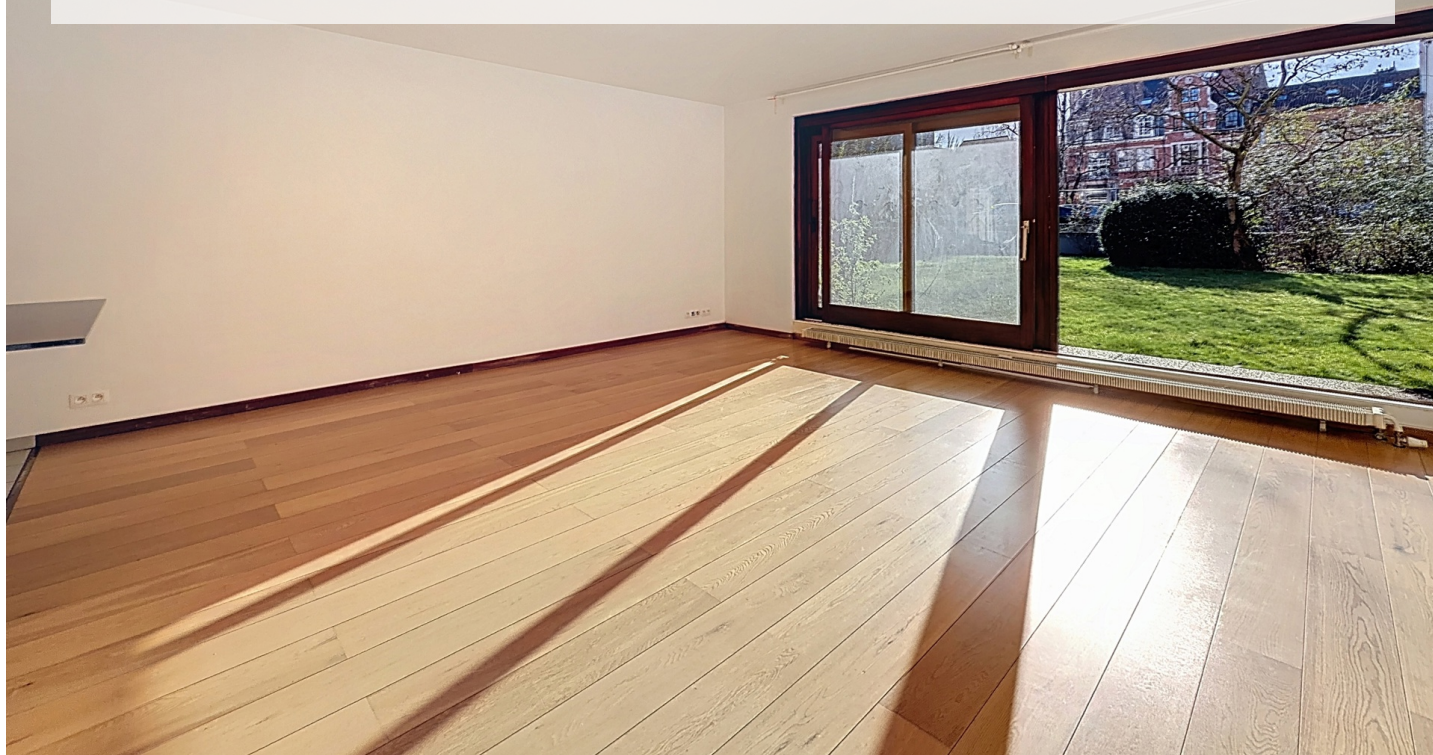
BRUGMANN PARK: BEAUTIFUL 2-BEDROOM APARTMENT W/SHARED GARDEN

450 000 €

Ref 7587911

Uccle - Apartment 1033 sq ft

**VANEAU
LECOBEL**
Real Estate Brussels



About this property

Ideally located in the Messidor district and opposite Brugmann Park, this superb apartment offers approximately 96 m² of living space in a residential building. It comprises an entrance hall, a large and bright living room (approximately 30 m²), a fully equipped open-plan kitchen (approximately 8 m²), two bedrooms (approximately 15 m² and 9 m²), and a bathroom. A southwest-facing terrace (approximately 8 m²) overlooking greenery. A cellar and parking space are included. The apartment features double glazing and a security door. Energy Performance Certificate (EPC) rating C. Don't miss this opportunity!

VANEAU LECOBEL
BRUSSELS SOUTH
G. Brugmann Square 10B
1050 Ixelles
ph +32 2 346 33 55
✉ [lecobel@vaneau-
lecobel.be](mailto:lecobel@vaneau-lecobel.be)

Reference : 7587911

Price : 450 000 €

Surface : 1033 sq ft

Bedroom(s) : 2

Floor : 1

Bathroom(s) : 1

Garden : Yes

Cellar : Yes

Elevator : Yes

Parking(s) : 1

Terrace : Yes

BRUGMANN PARK: BEAUTIFUL 2-BEDROOM APARTMENT W/SHARED GARDEN

450 000 €

Ref 7587911

Uccle - Apartment 1033 sq ft

**VANEAU
LECOBEL**
Real Estate Brussels





BRUGMANN PARK: BEAUTIFUL 2-BEDROOM APARTMENT W/SHARED GARDEN

450 000 €

Ref 7587911

Uccle - Apartment 1033 sq ft

**VANEAU
LECOBEL**
Real Estate Brussels





VANEAU

Immobilier de prestige depuis
1972

VANEAU LOCATION

Une équipe dédiée à Paris,
Neuilly et Boulogne

VANEAU VIAGER

30 ans d'expérience en vente
viagère

VANEAU

C'EST AUSSI

VANEAU BUREAUX & COMMERCES

+10 000 offres disponibles

VANEAU PATRIMOINE

Dispositifs de défiscalisation,
SCPI, Assurances Vie

VANEAU DIGITAL NEUF

La plate-forme digitale 100%
immobilier neuf

COURTAGE CRÉDITS

Exell Crédit immobiliers
Assurances emprunteurs

GESTION LOCATIVE

GTF, plus de 7 000 lots gérés à
Paris

140 collaborateurs

1200 signatures par an

1000 immeubles par an

2.5 milliards d'actifs gérés