

MOLIÈRE: SUMPTUOUS APARTMENT + TERRACES

3 800 €

Ref 7617235

Ixelles - Apartment 2530 sq ft

**VANEAU
LECOBEL**
Real Estate Brussels



About this property

On the prestigious Avenue Molière, a luxurious, characterful apartment, fully renovated in 2012, offers approximately 235 m² of living space in a magnificent 1905 townhouse. It comprises an entrance hall with a lift, cloakroom, and separate WC; a spacious and bright living room (approximately 70 m²) opening onto a dining room (three adjoining rooms); a large, fully equipped kitchen; a large hallway; three beautiful bedrooms (approximately 24 m², 17 m², and 16 m²); a bathroom; and a shower room. There are lovely terraces at the front and rear. A cellar is included, and a parking space is available at an additional cost of €100/month. Monthly charges are €235 (€50 provision for water and a fixed charge of €185 for the maintenance of common areas). Energy Performance Certificate (EPC) rating C-. Discover it as soon as possible!

VANEAU LECOBEL

RENTALS

Georges Brugmann square

10B, 1050 Ixelles

ph +32 2 340 72 85

✉ rent@vaneau-lecobel.be

Reference : 7617235

Price : 3 800 €

Surface : 2530 sq ft

Bedroom(s) : 3

Floor : 3

Bathroom(s) : 2

Shower room(s) : 1

Cellar : Yes

Elevator : Yes

Parking(s) : 1

Terrace : Yes

Loads : 235 €

Availabili 01/07/2026 -

ty : 12:00

MOLIÈRE: SUMPTUOUS APARTMENT + TERRACES

3 800 €

Ref 7617235

Ixelles - Apartment 2530 sq ft

**VANEAU
LECOBEL**
Real Estate Brussels





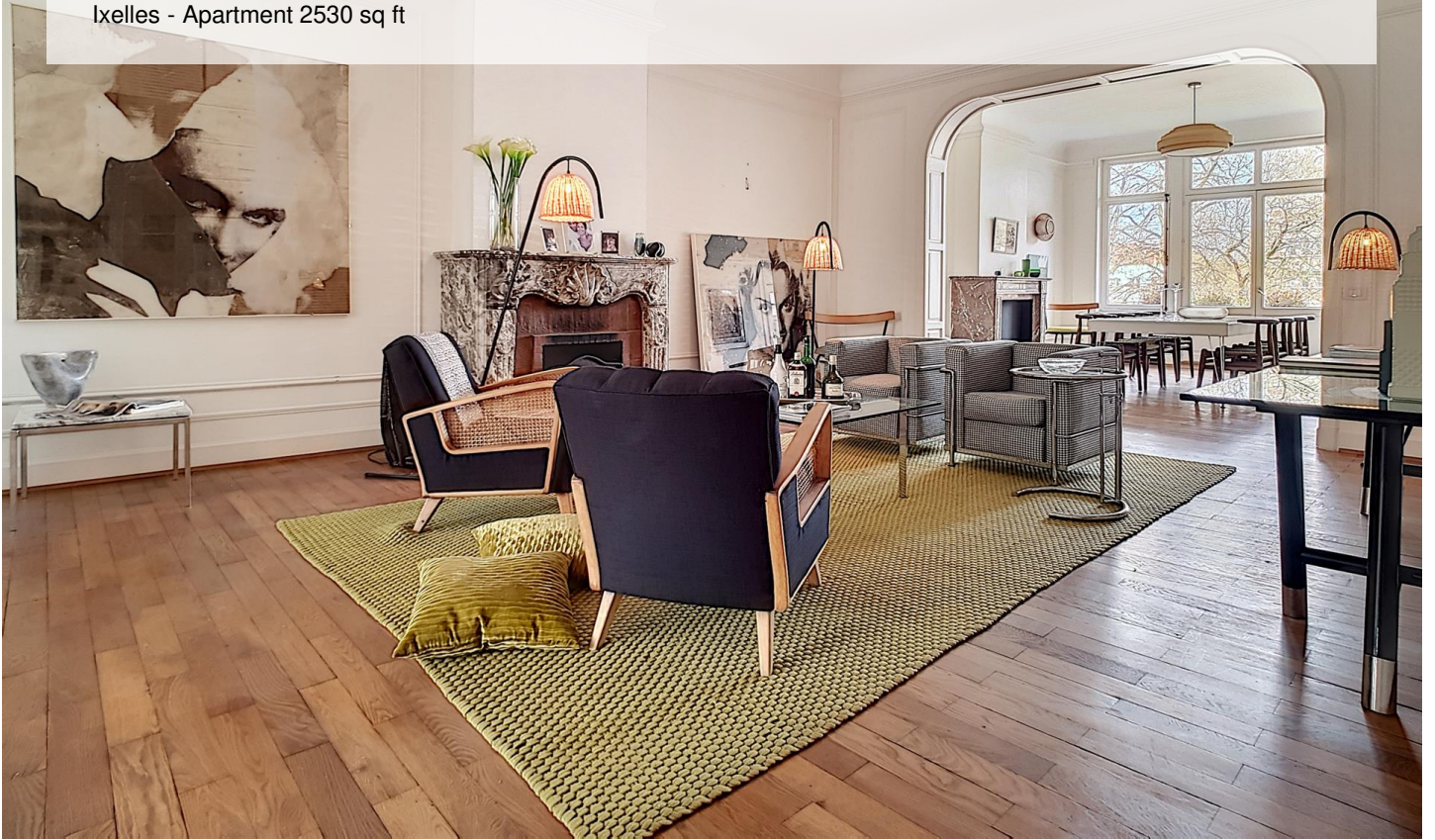
MOLIÈRE: SUMPTUOUS APARTMENT + TERRACES

3 800 €

Ref 7617235

Ixelles - Apartment 2530 sq ft

**VANEAU
LECOBEL**
Real Estate Brussels





VANEAU

Immobilier de prestige depuis
1972

VANEAU LOCATION

Une équipe dédiée à Paris,
Neuilly et Boulogne

VANEAU VIAGER

30 ans d'expérience en vente
viagère

VANEAU

C'EST AUSSI

VANEAU BUREAUX & COMMERCES

+10 000 offres disponibles

VANEAU PATRIMOINE

Dispositifs de défiscalisation,
SCPI, Assurances Vie

VANEAU DIGITAL NEUF

La plate-forme digitale 100%
immobilier neuf

COURTAGE CRÉDITS

Exell Crédit immobiliers
Assurances emprunteurs

GESTION LOCATIVE

GTF, plus de 7 000 lots gérés à
Paris

140 collaborateurs

1200 signatures par an

1000 immeubles par an

2.5 milliards d'actifs gérés