

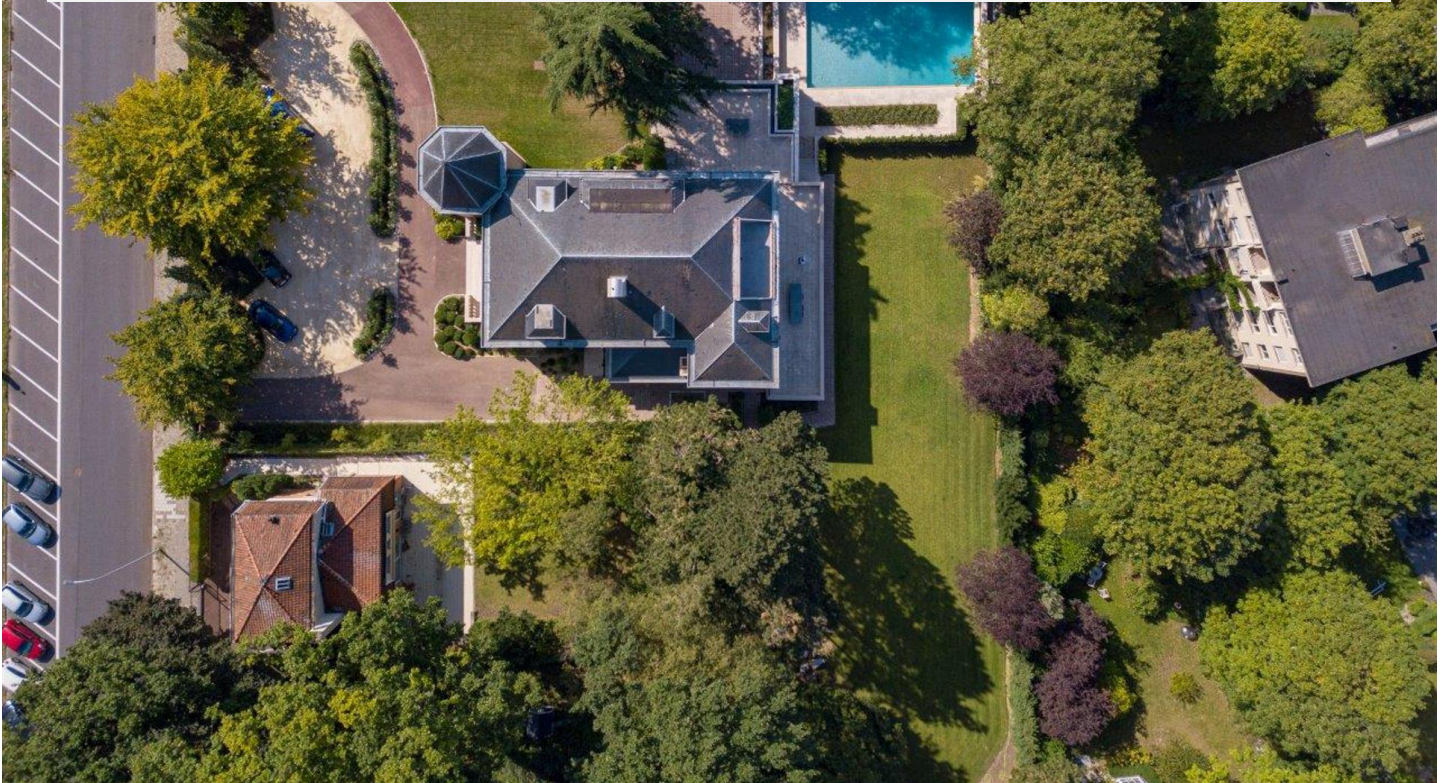
# SUMPTUOUS CLASSICAL RESIDENCE

Price upon request

Ref 7592173

Forest - House 13896 sq ft

**VANEAU  
LECOBEL**  
Real Estate Brussels



## About this property

In Forest, in a leafy neighborhood close to shops and public transport, offering easy access to the town center, this sumptuous architect-designed residence with French stone facades, dating from 1968, has been completely renovated by "3Ãme Bureau" and Esther Gutmer. This prestigious property is arranged over three levels, including a basement. It comprises the following: on the ground floor, a magnificent entrance hall with a mezzanine, a large 100 sq m wood-paneled living room, an 80 sq m formal dining room with access to the terrace, a small private dining room, a smoking room, a professional "La Cornue" kitchen, an office, and the master suite with a 50 sq m living room. On the first floor, there is a master bedroom with a dressing room and bathroom, two further bedrooms with bathrooms, and two additional bedrooms. An elevator is also provided. A concierge's apartment includes a living room, two bedrooms, and a bathroom. Outdoor swimming pool (8m x 15m) with shower and sauna. Storage cellars and wine cellar, games room, and enclosed garages for 4 cars. Energy Performance Certificate (EPC): E

VANEAU LECOBEL  
BRUSSELS SOUTH  
G. Brugmann Square 10B  
1050 Ixelles  
ph +32 2 346 33 55  
✉ [lecobel@vaneau-  
lecobel.be](mailto:lecobel@vaneau-lecobel.be)

**Reference :** 7592173

**Price upon request**

**Surface :** 13896 sq ft

**Bedroom(s) :** 6

**Bathroom(s) :** 5

**Shower room(s) :** 5

**Garden :** Yes

**Cellar :** Yes

**Elevator :** Yes

**Swimming pool :** Yes

**Parking(s) :** 1

---

**Terrace :** Yes

# SUMPTUOUS CLASSICAL RESIDENCE

Price upon request

Ref 7592173

Forest - House 13896 sq ft

**VANEAU  
LECOBEL**  
Real Estate Brussels



# SUMPTUOUS CLASSICAL RESIDENCE

Price upon request

Ref 7592173

Forest - House 13896 sq ft

**VANEAU  
LECOBEL**  
Real Estate Brussels



## **VANEAU**

Immobilier de prestige depuis  
1972

### **VANEAU LOCATION**

Une équipe dédiée à Paris,  
Neuilly et Boulogne

### **VANEAU VIAGER**

30 ans d'expérience en vente  
viagère

# **VANEAU**

## **C'EST AUSSI**

### **VANEAU BUREAUX & COMMERCES**

+10 000 offres disponibles

### **VANEAU PATRIMOINE**

Dispositifs de défiscalisation,  
SCPI, Assurances Vie

### **VANEAU DIGITAL NEUF**

La plate-forme digitale 100%  
immobilier neuf

### **COURTAGE CRÉDITS**

Exell Crédit immobiliers  
Assurances emprunteurs

### **GESTION LOCATIVE**

GTF, plus de 7 000 lots gérés à  
Paris

**140 collaborateurs**

**1200 signatures par an**

**1000 immeubles par an**

**2.5 milliards d'actifs gérés**