

# BOIS DE LA CAMBRE: BEAUTIFUL 3 BEDROOM APARTMENT + TERRACE

560 000 €

Ref 7121375

Ixelles - Apartment 1184 sq ft

**VANEAU  
LECOBEL**  
Real Estate Brussels



## About this property

Close to Bois de la Cambre, beautiful apartment measuring approximately 115 m<sup>2</sup> with a south-west facing terrace measuring approximately 6 m<sup>2</sup>. It comprises: entrance hall of ± 9.5 m<sup>2</sup>, second hall of ± 2.5 m<sup>2</sup>, cloakroom of ± 2 m<sup>2</sup>, guest toilet of ± 1 m<sup>2</sup>, living room of ± 28.5 m<sup>2</sup>, kitchen of ± 11 m<sup>2</sup>, utility room of ± 1.5 m<sup>2</sup>, hallway of ± 3.5 m<sup>2</sup>, 3 bedrooms of ± 16.5, 10.5 and 9.5 m<sup>2</sup>, shower room ± 4 m<sup>2</sup>, laundry room ± 1 m<sup>2</sup>, terrace ± 6 m<sup>2</sup> facing south-west. Also: double glazing, intercom, double garage box in length at an additional cost of €30,000, electricity compliant. PEB C. Don't delay, come and view today!

VANEAU LECOBEL  
BRUSSELS SOUTH  
G. Brugmann Square 10B  
1050 Ixelles  
ph +32 2 346 33 55  
✉ [lecobel@vaneau-  
lecobel.be](mailto:lecobel@vaneau-lecobel.be)

**Reference :** 7121375

**Price :** 560 000 €

**Surface :** 1184 sq ft

**Bedroom(s) :** 3

**Floor :** 1

**Bathroom(s) :** 1

**Cellar :** Yes

**Elevator :** Yes

**Parking(s) :** 1

**Terrace :** Yes

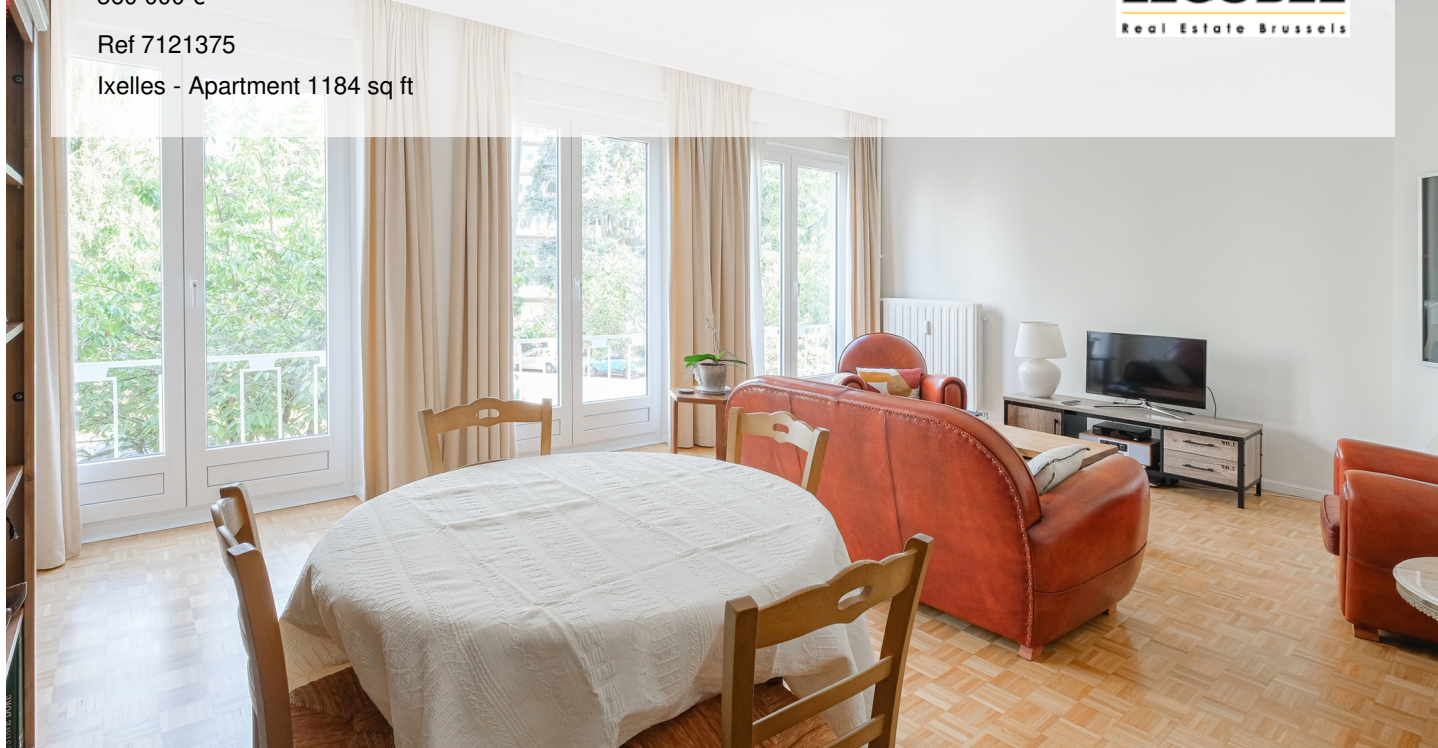
# BOIS DE LA CAMBRE: BEAUTIFUL 3 BEDROOM APARTMENT + TERRACE

560 000 €

Ref 7121375

Ixelles - Apartment 1184 sq ft

**VANEAU  
LECOBEL**  
Real Estate Brussels



# BOIS DE LA CAMBRE: BEAUTIFUL 3 BEDROOM APARTMENT + TERRACE

560 000 €

Ref 7121375

Ixelles - Apartment 1184 sq ft

**VANEAU  
LECOBEL**  
Real Estate Brussels



## **VANEAU**

Immobilier de prestige depuis  
1972

### **VANEAU LOCATION**

Une équipe dédiée à Paris,  
Neuilly et Boulogne

### **VANEAU VIAGER**

30 ans d'expérience en vente  
viagère

# **VANEAU**

## **C'EST AUSSI**

### **VANEAU BUREAUX & COMMERCES**

+10 000 offres disponibles

### **VANEAU PATRIMOINE**

Dispositifs de défiscalisation,  
SCPI, Assurances Vie

### **VANEAU DIGITAL NEUF**

La plate-forme digitale 100%  
immobilier neuf

### **COURTAGE CRÉDITS**

Exell Crédit immobiliers  
Assurances emprunteurs

### **GESTION LOCATIVE**

GTF, plus de 7 000 lots gérés à  
Paris

**140 collaborateurs**

**1200 signatures par an**

**1000 immeubles par an**

**2.5 milliards d'actifs gérés**