

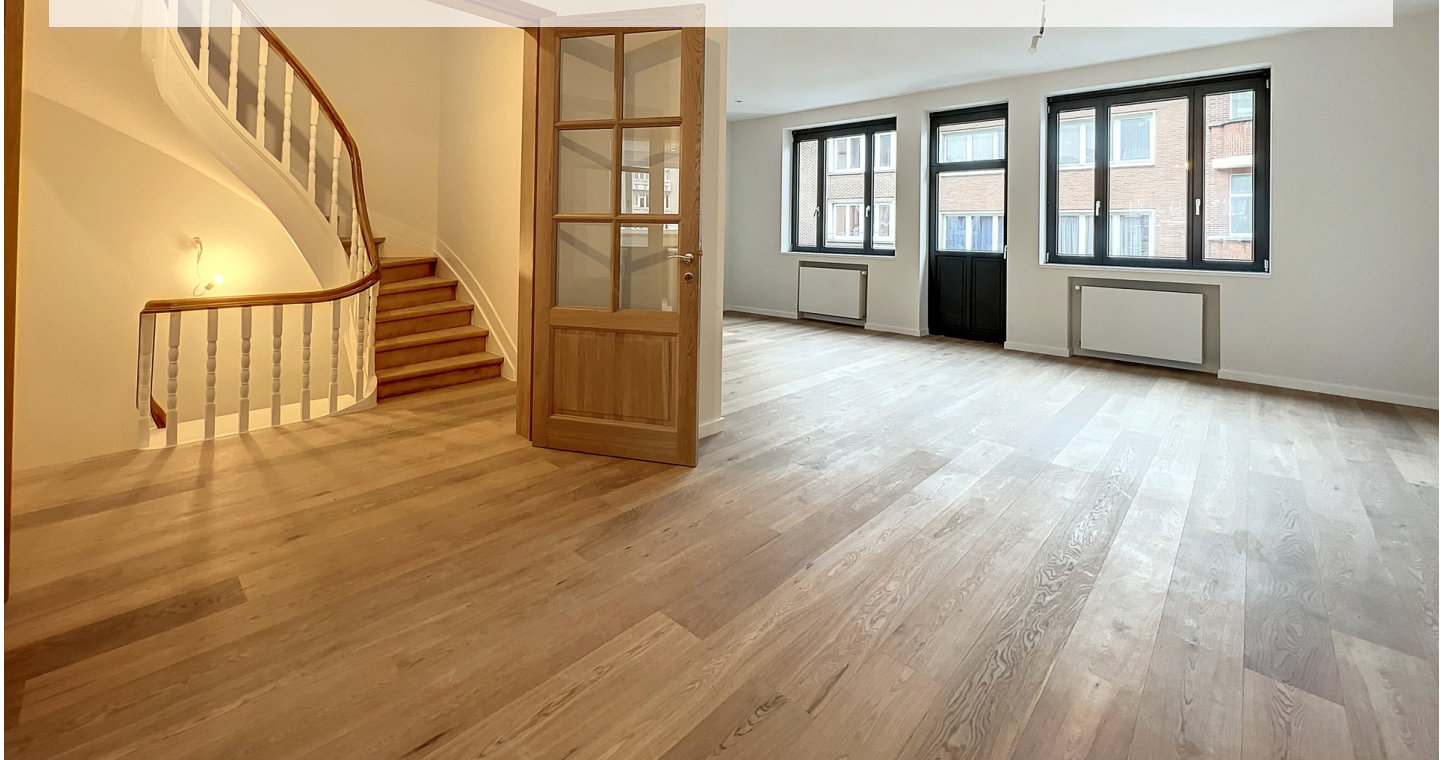
# UNDER OFFER! MOLIÈRE: RENOVATED TRIPLEX 3 BEDROOMS + OFFICE AND TERRACES

690 000 €

Ref 5834216

Uccle - Apartment 1851 sq ft

**VANEAU  
LECOBEL**  
Real Estate Brussels



## About this property

UNDER OFFER! Close to Place Constantin Meunier and Avenue Molière, fully renovated triplex ground floor apartment with a total area of  $\pm 172$  m<sup>2</sup> in a beautiful Bourgeois house. It is composed as follows: On the second floor, entrance hall with WC, American kitchen of  $\pm 18$  m<sup>2</sup>, North-east facing terrace of  $\pm 4$  m<sup>2</sup>, dining room and living room of  $\pm 45$  m<sup>2</sup>. On the third floor, entrance hall, 3 bedrooms of  $\pm 18$ ,  $16$  and  $11$  m<sup>2</sup>, North-East facing terrace of  $\pm 8$  m<sup>2</sup>, shower room and bathroom with WC. In the attic, fitted mezzanine. Also: Double glazing, wooden and PVC frames, oak parquet flooring, individual gas boiler, compliant electricity, optional garage box (€60,000), currently rented. PEB: D. To discover as soon as possible!

VANEAU LECOBEL  
BRUSSELS SOUTH  
G. Brugmann Square 10B  
1050 Ixelles  
ph +32 2 346 33 55  
✉ [lecobel@vaneau-  
lecobel.be](mailto:lecobel@vaneau-lecobel.be)

**Reference :** 5834216

**Price :** 690 000 €

**Surface :** 1851 sq ft

**Bedroom(s) :** 3

**Floor :** 2

**Bathroom(s) :** 2

**Garden :** Yes

**Cellar :** Yes

**Parking(s) :** 1

**Terrace :** Yes

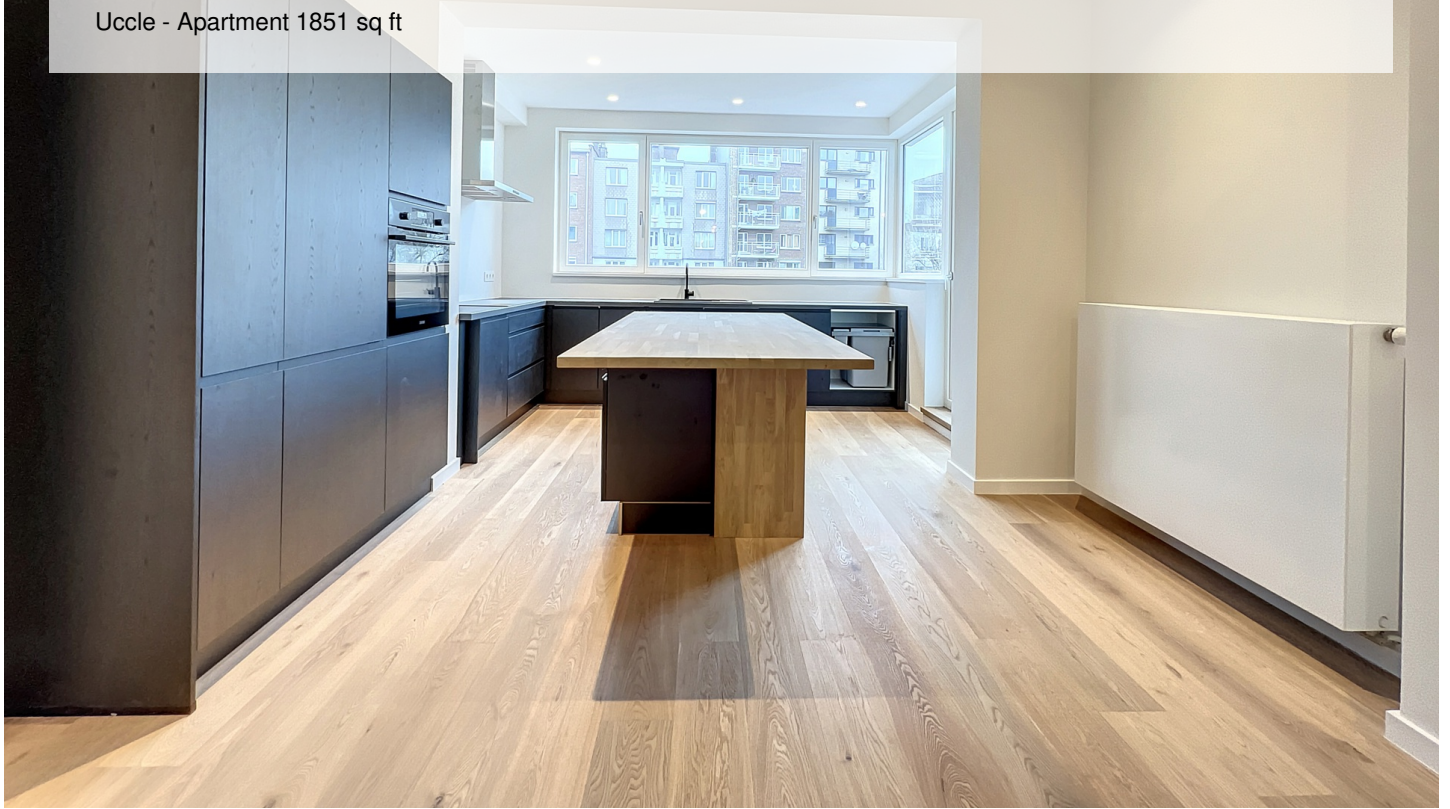
**UNDER OFFER! MOLIÈRE: RENOVATED TRIPLEX 3  
BEDROOMS + OFFICE AND TERRACES**

690 000 €

Ref 5834216

Uccle - Apartment 1851 sq ft

**VANEAU  
LECOBEL**  
Real Estate Brussels





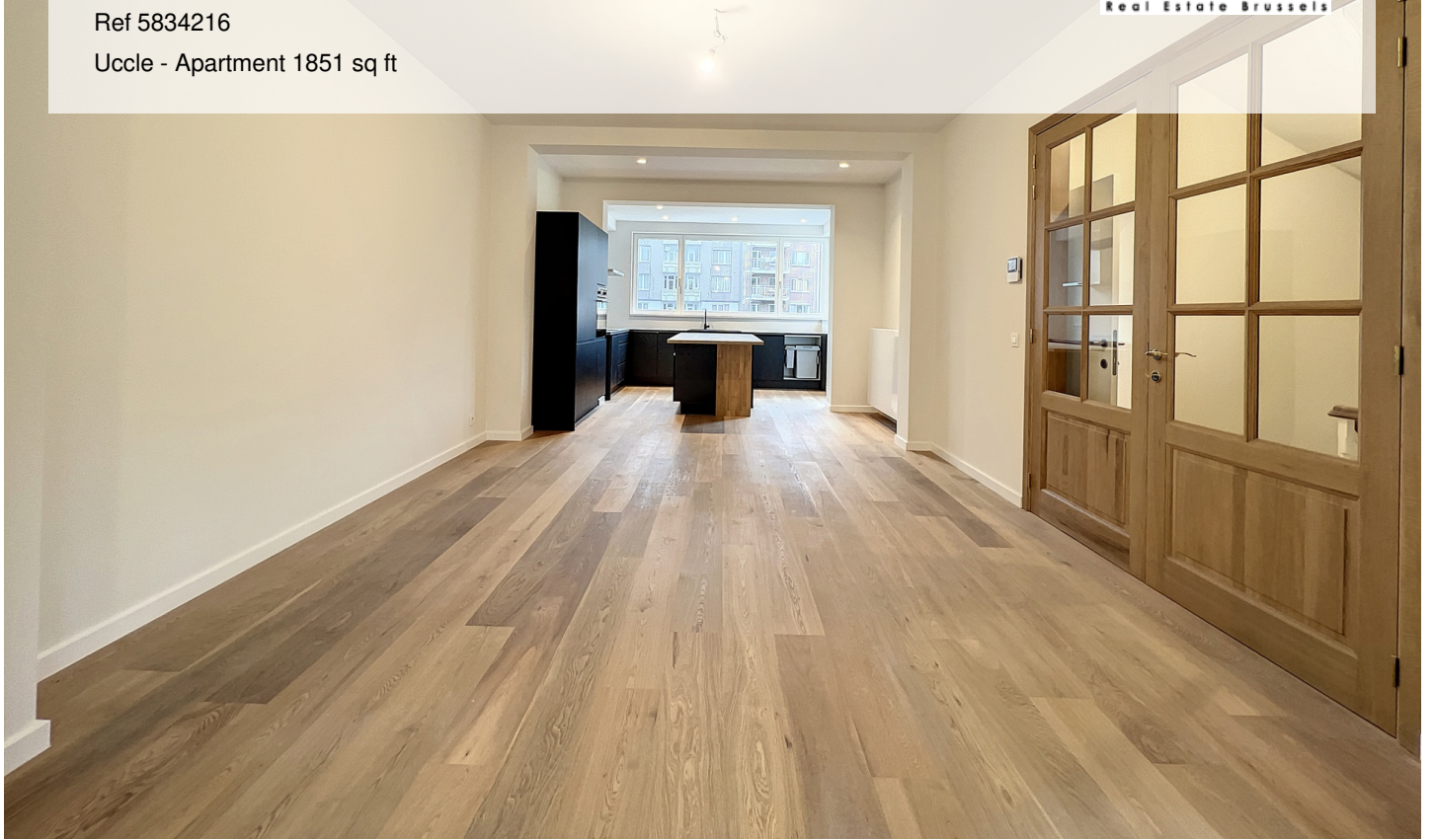
**UNDER OFFER! MOLIÈRE: RENOVATED TRIPLEX 3  
BEDROOMS + OFFICE AND TERRACES**

690 000 €

Ref 5834216

Uccle - Apartment 1851 sq ft

**VANEAU  
LECOBEL**  
Real Estate Brussels





## **VANEAU**

Immobilier de prestige depuis  
1972

### **VANEAU LOCATION**

Une équipe dédiée à Paris,  
Neuilly et Boulogne

### **VANEAU VIAGER**

30 ans d'expérience en vente  
viagère

# **VANEAU**

## **C'EST AUSSI**

### **VANEAU BUREAUX & COMMERCES**

+10 000 offres disponibles

### **VANEAU PATRIMOINE**

Dispositifs de défiscalisation,  
SCPI, Assurances Vie

### **VANEAU DIGITAL NEUF**

La plate-forme digitale 100%  
immobilier neuf

### **COURTAGE CRÉDITS**

Exell Crédit immobiliers  
Assurances emprunteurs

### **GESTION LOCATIVE**

GTF, plus de 7 000 lots gérés à  
Paris

**140 collaborateurs**

**1200 signatures par an**

**1000 immeubles par an**

**2.5 milliards d'actifs gérés**